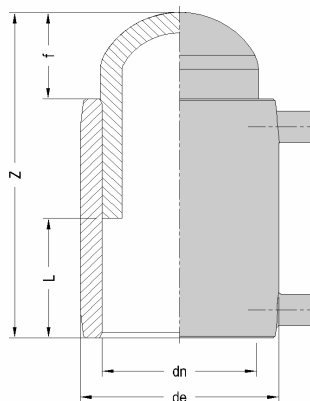


PRODUCT DETAILS



DIMENSIONS AND WEIGHT



ITEM	2136160032
dn [mm]	32
dn1 [mm]	
SDR	11
PN	16
MATERIAL	PE100
TRADEMARK	EURO
MANUFACTURING TYPE	INJECTION MOULDED
USE	WATER-GAS
QUANTITY PER BOX	16

NOTE:

dn	[mm]	32
de	[mm]	46
f	[mm]	21
L	[mm]	38
Z	[mm]	99

WEIGHT	[g]	97
--------	-----	----

Tolerance: +/- 5% excluding dn

STANDARDS AND APPROVALS

EN 12201
EN 1555
ISO 15494
DVGW

MARKING AND LABEL on fitting



PE100 d32 SDR11 PN16

WELDING INFORMATION

RESISTANCE [Ohm]	1,59
VOLTAGE [V]	24
FUSION TIME [sec]	50
COOLING TIME [min]	10

Weldability barcode	35211815-032-8-24-159-5-050-74-9
---------------------	----------------------------------

CIRCUIT TYPE	SINGLE WIRE
CONNECTOR DIAMETER [mm]	4,0

WELDABILITY on pipe/fitting :

SDR 33	NO
SDR 26	NO
SDR 17	NO
SDR 11	YES
SDR 9	NO
SDR 7,4	NO

INFOS

- ABSOLUTELY compulsory the pipes scraping

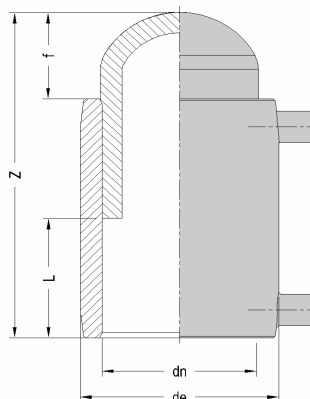
- Moulded in PE100-RC

All dimensions are in millimeters and are intended as nominal and standard sizes: weights are in grams.
EUROSTANDARD reserves the right to change geometries and dimensions of any product.

PRODUCT DETAILS



DIMENSIONS AND WEIGHT



ITEM	2136160040
dn [mm]	40
dn1 [mm]	
SDR	11
PN	16
MATERIAL	PE100
TRADEMARK	EURO
MANUFACTURING TYPE	INJECTION MOULDED
USE	WATER-GAS
QUANTITY PER BOX	10

dn	[mm]	40
de	[mm]	56
f	[mm]	24
L	[mm]	44
Z	[mm]	113

WEIGHT	[g]	145
--------	-----	-----

Tolerance: +/- 5% excluding dn

NOTE:

STANDARDS AND APPROVALS

- EN 12201
- EN 1555
- ISO 15494
- DVGW

MARKING AND LABEL on fitting



PE100 d40 SDR11 PN16

WELDING INFORMATION

RESISTANCE [Ohm]	1,13
VOLTAGE [V]	24
FUSION TIME [sec]	60
COOLING TIME [min]	10

Weldability barcode	35211815-040-8-24-113-5-060-74-5
---------------------	----------------------------------

CIRCUIT TYPE	SINGLE WIRE
CONNECTOR DIAMETER [mm]	4,0

WELDABILITY on pipe/fitting :

SDR 33	NO
SDR 26	NO
SDR 17	NO
SDR 11	YES
SDR 9	NO
SDR 7,4	NO

INFOS

- ABSOLUTELY compulsory the pipes scraping

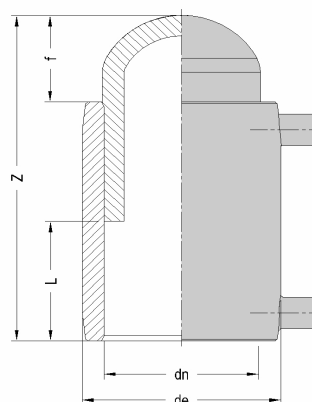
- Moulded in PE100-RC

All dimensions are in millimeters and are intended as nominal and standard sizes: weights are in grams. EUROSTANDARD reserves the right to change geometries and dimensions of any product.

PRODUCT DETAILS



DIMENSIONS AND WEIGHT



ITEM	2136160050
dn [mm]	50
dn1 [mm]	
SDR	11
PN	16
MATERIAL	PE100
TRADEMARK	EURO
MANUFACTURING TYPE	INJECTION MOULDED
USE	WATER-GAS
QUANTITY PER BOX	12

dn	[mm]	50
de	[mm]	68
f	[mm]	25
L	[mm]	49
Z	[mm]	124

WEIGHT [g] 205

Tolerance: +/- 5% excluding dn

NOTE:

STANDARDS AND APPROVALS

EN 12201
EN 1555
ISO 15494
DVGW

MARKING AND LABEL on fitting



PE100 d50 SDR11 PN16

WELDING INFORMATION

RESISTANCE [Ohm]	1,02
VOLTAGE [V]	24
FUSION TIME [sec]	80
COOLING TIME [min]	15

Weldability barcode 35211815-050-8-24-102-5-080-74-6

CIRCUIT TYPE	SINGLE WIRE
CONNECTOR DIAMETER [mm]	4,0

WELDABILITY on pipe/fitting :

SDR 33	NO
SDR 26	NO
SDR 17	NO
SDR 11	YES
SDR 9	NO
SDR 7,4	NO

INFOS

- ABSOLUTELY compulsory the pipes scraping

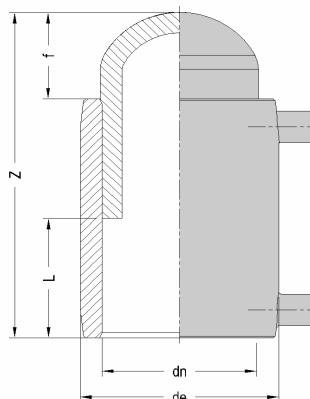
- Moulded in PE100-RC

All dimensions are in millimeters and are intended as nominal and standard sizes: weights are in grams.
EUROSTANDARD reserves the right to change geometries and dimensions of any product.

PRODUCT DETAILS



DIMENSIONS AND WEIGHT



ITEM	2136160063
dn [mm]	63
dn1 [mm]	
SDR	11
PN	16
MATERIAL	PE100
TRADEMARK	EURO
MANUFACTURING TYPE	INJECTION MOULDED
USE	WATER-GAS
QUANTITY PER BOX	18

dn	[mm]	63
de	[mm]	82
f	[mm]	25
L	[mm]	55
Z	[mm]	136

WEIGHT	[g]	310
--------	-----	-----

Tolerance: +/- 5% excluding dn

NOTE:

MARKING AND LABEL on fitting



PE100 d63 SDR11 PN16

STANDARDS AND APPROVALS

- EN 12201
- EN 1555
- ISO 15494
- DVGW

WELDING INFORMATION

RESISTANCE [Ohm]	0,67	Weldability barcode	35211815-063-8-24-067-6-110-74-1
VOLTAGE [V]	24		
FUSION TIME [sec]	110	CIRCUIT TYPE	SINGLE WIRE
COOLING TIME [min]	15	CONNECTOR DIAMETER [mm]	4,0

WELDABILITY on pipe/fitting :

SDR 33	NO
SDR 26	NO
SDR 17	NO
SDR 11	YES
SDR 9	NO
SDR 7,4	NO

INFOS

- ABSOLUTELY compulsory the pipes scraping

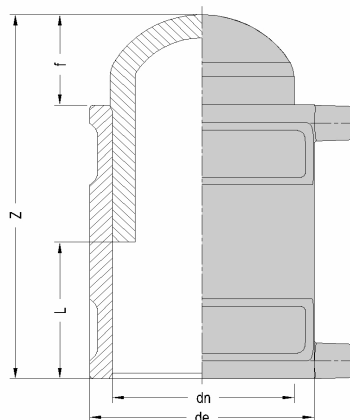
- Moulded in PE100-RC

All dimensions are in millimeters and are intended as nominal and standard sizes: weights are in grams. EUROSTANDARD reserves the right to change geometries and dimensions of any product.

PRODUCT DETAILS



DIMENSIONS AND WEIGHT



ITEM	2136160075
dn [mm]	75
dn1 [mm]	
SDR	11
PN	16
MATERIAL	PE100
TRADEMARK	EURO
MANUFACTURING TYPE	INJECTION MOULDED
USE	WATER-GAS
QUANTITY PER BOX	15

NOTE:

dn	[mm]	75
de	[mm]	93
f	[mm]	28
L	[mm]	61
Z	[mm]	149

WEIGHT [g] 420

Tolerance: +/- 5% excluding dn

STANDARDS AND APPROVALS

EN 12201
 EN 1555
 ISO 15494
 DVGW
 WRAS

MARKING AND LABEL on fitting



PE100 d75 SDR11 PN16

WELDING INFORMATION

RESISTANCE [Ohm]	0,54	Weldability barcode	35211815-075-8-24-054-6-115-74-9
VOLTAGE [V]	24		
FUSION TIME [sec]	115	CIRCUIT TYPE	SINGLE WIRE
COOLING TIME [min]	20	CONNECTOR DIAMETER [mm]	4,0

WELDABILITY on pipe/fitting :

SDR 33	NO
SDR 26	NO
SDR 17	YES
SDR 11	YES
SDR 9	NO
SDR 7,4	NO

INFOS

- ABSOLUTELY compulsory the pipes scraping

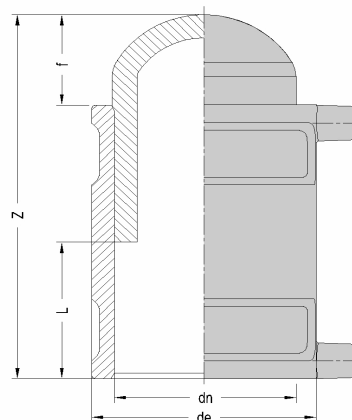
- Moulded in PE100-RC

All dimensions are in millimeters and are intended as nominal and standard sizes: weights are in grams.
 EUROSTANDARD reserves the right to change geometries and dimensions of any product.

PRODUCT DETAILS



DIMENSIONS AND WEIGHT



ITEM	2136160090
dn [mm]	90
dn1 [mm]	
SDR	11
PN	16
MATERIAL	PE100
TRADEMARK	EURO
MANUFACTURING TYPE	INJECTION MOULDED
USE	WATER-GAS
QUANTITY PER BOX	15

dn	[mm]	90
de	[mm]	113
f	[mm]	34
L	[mm]	66
Z	[mm]	165

WEIGHT	[g]	655
--------	-----	-----

Tolerance: +/- 5% excluding dn

NOTE:

STANDARDS AND APPROVALS

- EN 12201
- EN 1555
- ISO 15494
- DVGW
- WRAS

MARKING AND LABEL on fitting



PE100 d90 SDR11 PN16

WELDING INFORMATION

RESISTANCE [Ohm]	1,34
VOLTAGE [V]	40
FUSION TIME [sec]	180
COOLING TIME [min]	20

Weldability barcode	35211815-090-8-40-134-6-180-74-7
---------------------	----------------------------------

CIRCUIT TYPE	SINGLE WIRE
CONNECTOR DIAMETER [mm]	4,0

WELDABILITY on pipe/fitting :

SDR 33	NO
SDR 26	NO
SDR 17	YES
SDR 11	YES
SDR 9	NO
SDR 7,4	NO

INFOS

- ABSOLUTELY compulsory the pipes scraping

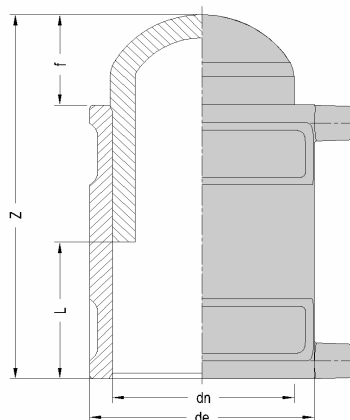
- Moulded in PE100-RC

All dimensions are in millimeters and are intended as nominal and standard sizes: weights are in grams. EUROSTANDARD reserves the right to change geometries and dimensions of any product.

PRODUCT DETAILS



DIMENSIONS AND WEIGHT



ITEM	2136160110
dn [mm]	110
dn1 [mm]	
SDR	11
PN	16
MATERIAL	PE100
TRADEMARK	EURO
MANUFACTURING TYPE	INJECTION MOULDED
USE	WATER-GAS
QUANTITY PER BOX	10

dn	[mm]	110
de	[mm]	137
f	[mm]	48
L	[mm]	70
Z	[mm]	188

WEIGHT	[g]	1050
--------	-----	------

Tolerance: +/- 5% excluding dn

NOTE:

STANDARDS AND APPROVALS

- EN 12201
- EN 1555
- ISO 15494
- DVGW
- WRAS

MARKING AND LABEL on fitting



PE100 d110 SDR11 PN16

WELDING INFORMATION

RESISTANCE [Ohm]	1,16	Weldability barcode	35211815-110-8-40-116-6-225-74-6
VOLTAGE [V]	40		
FUSION TIME [sec]	225	CIRCUIT TYPE	SINGLE WIRE
COOLING TIME [min]	20	CONNECTOR DIAMETER [mm]	4,0

WELDABILITY on pipe/fitting :

SDR 33	NO
SDR 26	NO
SDR 17	YES
SDR 11	YES
SDR 9	NO
SDR 7,4	NO

INFOS

- ABSOLUTELY compulsory the pipes scraping

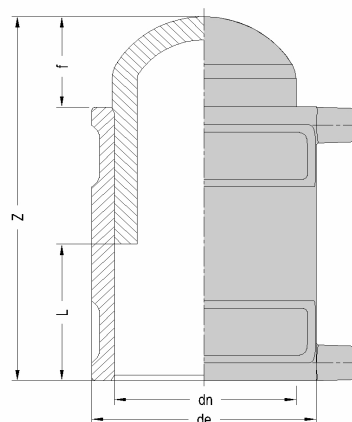
- Moulded in PE100-RC

All dimensions are in millimeters and are intended as nominal and standard sizes: weights are in grams. EUROSTANDARD reserves the right to change geometries and dimensions of any product.

PRODUCT DETAILS



DIMENSIONS AND WEIGHT



ITEM	2136160125
dn [mm]	125
dn1 [mm]	
SDR	11
PN	16
MATERIAL	PE100
TRADEMARK	EURO
MANUFACTURING TYPE	INJECTION MOULDED
USE	WATER-GAS
QUANTITY PER BOX	1

dn	[mm]	125
de	[mm]	152
f	[mm]	46
L	[mm]	76
Z	[mm]	198

WEIGHT	[g]	1440
--------	-----	------

Tolerance: +/- 5% excluding dn

NOTE:

STANDARDS AND APPROVALS

EN 12201
 EN 1555
 ISO 15494
 DVGW
 WRAS

MARKING AND LABEL on fitting



PE100 d125 SDR11 PN16

WELDING INFORMATION

RESISTANCE [Ohm]	1,05	Weldability barcode	35211815-125-8-40-105-6-315-74-2
VOLTAGE [V]	40		
FUSION TIME [sec]	315	CIRCUIT TYPE	SINGLE WIRE
COOLING TIME [min]	25	CONNECTOR DIAMETER [mm]	4,0

WELDABILITY on pipe/fitting :

SDR 33	NO
SDR 26	NO
SDR 17	YES
SDR 11	YES
SDR 9	NO
SDR 7,4	NO

INFOS

- ABSOLUTELY compulsory the pipes scraping

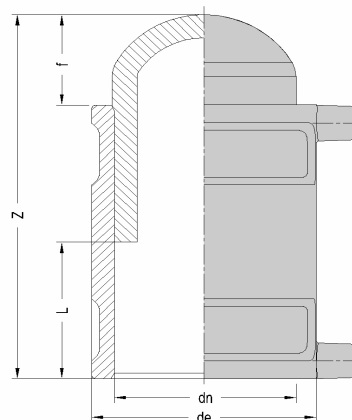
- Moulded in PE100-RC

All dimensions are in millimeters and are intended as nominal and standard sizes: weights are in grams.
 EUROSTANDARD reserves the right to change geometries and dimensions of any product.

PRODUCT DETAILS



DIMENSIONS AND WEIGHT



ITEM	2136160140
dn [mm]	140
dn1 [mm]	
SDR	11
PN	16
MATERIAL	PE100
TRADEMARK	EURO
MANUFACTURING TYPE	INJECTION MOULDED
USE	WATER-GAS
QUANTITY PER BOX	1

dn	[mm]	140
de	[mm]	170
f	[mm]	43
L	[mm]	82
Z	[mm]	206

WEIGHT	[g]	1900
--------	-----	------

Tolerance: +/- 5% excluding dn

NOTE:

STANDARDS AND APPROVALS

- EN 12201
- EN 1555
- ISO 15494
- DVGW
- WRAS

MARKING AND LABEL on fitting



PE100 d140 SDR11 PN16

WELDING INFORMATION

RESISTANCE [Ohm]	0,99
VOLTAGE [V]	40
FUSION TIME [sec]	375
COOLING TIME [min]	25

Weldability barcode	35211815-140-8-40-099-6-375-74-1
---------------------	----------------------------------

CIRCUIT TYPE	SINGLE WIRE
CONNECTOR DIAMETER [mm]	4,0

WELDABILITY on pipe/fitting :

SDR 33	NO
SDR 26	NO
SDR 17	YES
SDR 11	YES
SDR 9	NO
SDR 7,4	NO

INFOS

- ABSOLUTELY compulsory the pipes scraping

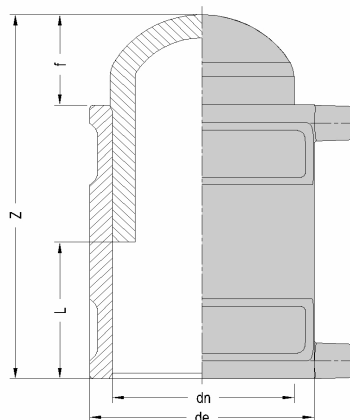
- Moulded in PE100-RC

All dimensions are in millimeters and are intended as nominal and standard sizes: weights are in grams. EUROSTANDARD reserves the right to change geometries and dimensions of any product.

PRODUCT DETAILS



DIMENSIONS AND WEIGHT



ITEM	2136160160
dn [mm]	160
dn1 [mm]	
SDR	11
PN	16
MATERIAL	PE100
TRADEMARK	EURO
MANUFACTURING TYPE	INJECTION MOULDED
USE	WATER-GAS
QUANTITY PER BOX	1

NOTE:

dn	[mm]	160
de	[mm]	198
f	[mm]	48
L	[mm]	86
Z	[mm]	220

WEIGHT [g] 2460

Tolerance: +/- 5% excluding dn

STANDARDS AND APPROVALS

EN 12201
EN 1555
ISO 15494
DVGW
WRAS

MARKING AND LABEL on fitting



PE100 d160 SDR11 PN16

WELDING INFORMATION

RESISTANCE [Ohm]	0,86	Weldability barcode	35211815-160-8-40-086-6-450-74-3
VOLTAGE [V]	40		
FUSION TIME [sec]	450	CIRCUIT TYPE	SINGLE WIRE
COOLING TIME [min]	30	CONNECTOR DIAMETER [mm]	4,0

WELDABILITY on pipe/fitting :

SDR 33	NO
SDR 26	NO
SDR 17	YES
SDR 11	YES
SDR 9	NO
SDR 7,4	NO

INFOS

- ABSOLUTELY compulsory the pipes scraping

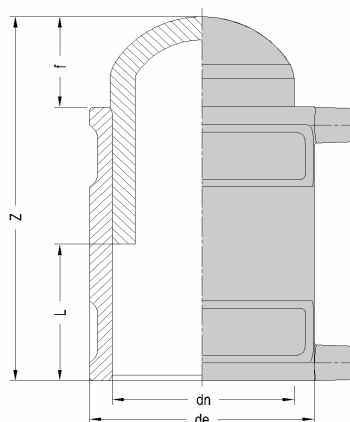
- Moulded in PE100-RC

All dimensions are in millimeters and are intended as nominal and standard sizes: weights are in grams.
EUROSTANDARD reserves the right to change geometries and dimensions of any product.

PRODUCT DETAILS



DIMENSIONS AND WEIGHT



ITEM	2136160180
dn [mm]	180
dn1 [mm]	
SDR	11
PN	16
MATERIAL	PE100
TRADEMARK	EURO
MANUFACTURING TYPE	INJECTION MOULDED
USE	WATER-GAS
QUANTITY PER BOX	1

NOTE:

dn	[mm]	180
de	[mm]	223
f	[mm]	50
L	[mm]	100
Z	[mm]	250

WEIGHT [g] 3635

Tolerance: +/- 5% excluding dn

STANDARDS AND APPROVALS

EN 12201
EN 1555
ISO 15494
DVGW

MARKING AND LABEL on fitting



PE100 d180 SDR11 PN16

WELDING INFORMATION

RESISTANCE [Ohm]	0,74	Weldability barcode	35211815-180-8-40-074-6-480-74-2
VOLTAGE [V]	40		
FUSION TIME [sec]	480	CIRCUIT TYPE	SINGLE WIRE
COOLING TIME [min]	30	CONNECTOR DIAMETER [mm]	4,0

WELDABILITY on pipe/fitting :

SDR 33	NO
SDR 26	NO
SDR 17	YES
SDR 11	YES
SDR 9	NO
SDR 7,4	NO

INFOS

- ABSOLUTELY compulsory the pipes scraping

- Moulded in PE100-RC

All dimensions are in millimeters and are intended as nominal and standard sizes: weights are in grams.
EUROSTANDARD reserves the right to change geometries and dimensions of any product.