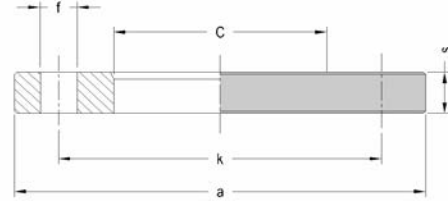


PRODUCT DETAILS



DIMENSIONS AND WEIGHT



ITEM	2040100025
dn [mm]	25
dn1 [mm]	
SDR	
PN	10/16
MATERIAL	ALUMINIUM
TRADEMARK	
MANUFACTURING TYPE	
USE	WATER-GAS
QUANTITY PER BOX	1

dn	[mm]	25	HOLES N.	4
D ALUMINIUM	[mm]	20	PN	PN 10/16
C	[mm]	38		
s	[mm]	12		
a	[mm]	105		
k	[mm]	75		
f	[mm]	14	WEIGHT	[g] 250

Tolerance: +/- 5% excluding dn

NOTE:

MARKING AND LABEL on fitting

DN20/DE25 PN10/PN16

STANDARDS AND APPROVALS

ISO 9624

INFOS

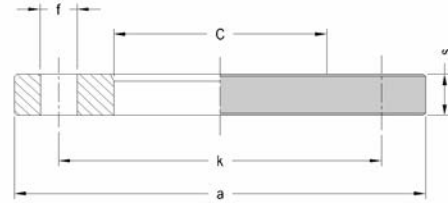
- Aluminium flange not painted
- Mating dimensions according to standard EN 1092-1 with internal diameter according to standard ISO 9624
- Flanges suitable both PN 10 and PN 16
- The pipeline diameter identifies the choice of the flange

All dimensions are in millimeters and are intended as nominal and standard sizes: weights are in grams. EUROSTANDARD reserves the right to change geometries and dimensions of any product.

PRODUCT DETAILS



DIMENSIONS AND WEIGHT



ITEM	2040100032
dn [mm]	32
dn1 [mm]	
SDR	
PN	10/16
MATERIAL	ALUMINIUM
TRADEMARK	
MANUFACTURING TYPE	
USE	WATER-GAS
QUANTITY PER BOX	1

dn	[mm]	32	HOLES N.	4
D ALUMINIUM	[mm]	25	PN	PN 10/16
C	[mm]	45		
s	[mm]	12		
a	[mm]	115		
k	[mm]	85		
f	[mm]	14	WEIGHT	[g] 250

Tolerance: +/- 5% excluding dn

NOTE:

MARKING AND LABEL on fitting

DN25/DE32 PN10/PN16

STANDARDS AND APPROVALS

ISO 9624

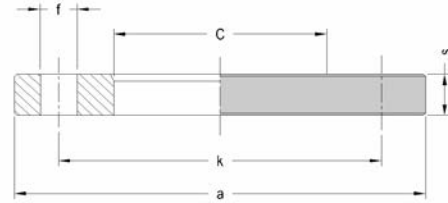
INFOS

- Aluminium flange not painted
- Mating dimensions according to standard EN 1092-1 with internal diameter according to standard ISO 9624
- Flanges suitable both PN 10 and PN 16
- The pipeline diameter identifies the choice of the flange

PRODUCT DETAILS



DIMENSIONS AND WEIGHT



ITEM	2040100040
dn [mm]	40
dn1 [mm]	
SDR	
PN	10/16
MATERIAL	ALUMINIUM
TRADEMARK	
MANUFACTURING TYPE	
USE	WATER-GAS
QUANTITY PER BOX	1

dn	[mm]	40	HOLES N.	4
D ALUMINIUM	[mm]	32	PN	PN 10/16
C	[mm]	55		
s	[mm]	16		
a	[mm]	140		
k	[mm]	100		
f	[mm]	18	WEIGHT	[g] 500

Tolerance: +/- 5% excluding dn

MARKING AND LABEL on fitting

DN32/DE40 PN10/PN16

STANDARDS AND APPROVALS

ISO 9624

INFOS

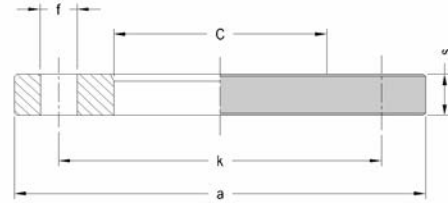
- Aluminium flange not painted
- Mating dimensions according to standard EN 1092-1 with internal diameter according to standard ISO 9624
- Flanges suitable both PN 10 and PN 16
- The pipeline diameter identifies the choice of the flange

All dimensions are in millimeters and are intended as nominal and standard sizes: weights are in grams. EUROSTANDARD reserves the right to change geometries and dimensions of any product.

PRODUCT DETAILS



DIMENSIONS AND WEIGHT



ITEM	2040100050
dn [mm]	50
dn1 [mm]	
SDR	
PN	10/16
MATERIAL	ALUMINIUM
TRADEMARK	
MANUFACTURING TYPE	
USE	WATER-GAS
QUANTITY PER BOX	1
NOTE:	

dn	[mm]	50	HOLES N.	4
D ALUMINIUM	[mm]	40	PN	PN 10/16
C	[mm]	66		
s	[mm]	16		
a	[mm]	150		
k	[mm]	110		
f	[mm]	18	WEIGHT	[g] 550
Tolerance: +/- 5% excluding dn				

MARKING AND LABEL on fitting

DN40/DE50 PN10/PN16

STANDARDS AND APPROVALS

ISO 9624

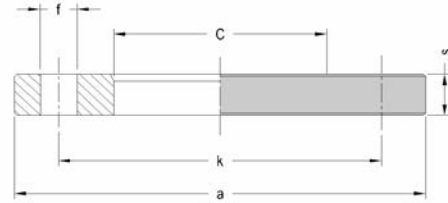
INFOS

- Aluminium flange not painted
- Mating dimensions according to standard EN 1092-1 with internal diameter according to standard ISO 9624
- Flanges suitable both PN 10 and PN 16
- The pipeline diameter identifies the choice of the flange

PRODUCT DETAILS



DIMENSIONS AND WEIGHT



ITEM	2040100063
dn [mm]	63
dn1 [mm]	
SDR	
PN	10/16
MATERIAL	ALUMINIUM
TRADEMARK	
MANUFACTURING TYPE	
USE	WATER-GAS
QUANTITY PER BOX	1

dn	[mm]	63	HOLES N.	4
D ALUMINIUM	[mm]	50	PN	PN 10/16
C	[mm]	78		
s	[mm]	20		
a	[mm]	165		
k	[mm]	125		
f	[mm]	18	WEIGHT	[g] 690

Tolerance: +/- 5% excluding dn

NOTE:

MARKING AND LABEL on fitting

DN50/DE63 PN10/PN16

STANDARDS AND APPROVALS

ISO 9624

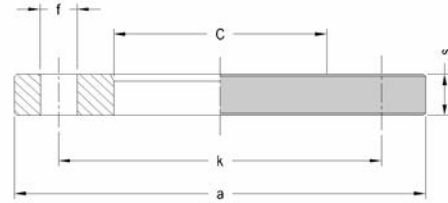
INFOS

- Aluminium flange not painted
- Mating dimensions according to standard EN 1092-1 with internal diameter according to standard ISO 9624
- Flanges suitable both PN 10 and PN 16
- The pipeline diameter identifies the choice of the flange

PRODUCT DETAILS



DIMENSIONS AND WEIGHT



ITEM	2040100075
dn [mm]	75
dn1 [mm]	
SDR	
PN	10/16
MATERIAL	ALUMINIUM
TRADEMARK	
MANUFACTURING TYPE	
USE	WATER-GAS
QUANTITY PER BOX	1

dn	[mm]	75	HOLES N.	4
D ALUMINIUM	[mm]	65	PN	PN 10/16
C	[mm]	92		
s	[mm]	20		
a	[mm]	185		
k	[mm]	145		
f	[mm]	18	WEIGHT	[g] 880

Tolerance: +/- 5% excluding dn

NOTE:

MARKING AND LABEL on fitting

DN65/DE75 PN10/PN16

STANDARDS AND APPROVALS

ISO 9624

INFOS

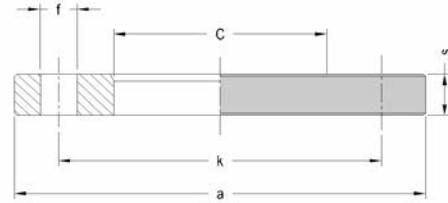
- Aluminium flange not painted
- Mating dimensions according to standard EN 1092-1 with internal diameter according to standard ISO 9624
- Flanges suitable both PN 10 and PN 16
- The pipeline diameter identifies the choice of the flange

All dimensions are in millimeters and are intended as nominal and standard sizes: weights are in grams. EUROSTANDARD reserves the right to change geometries and dimensions of any product.

PRODUCT DETAILS



DIMENSIONS AND WEIGHT



ITEM	2040100090
dn [mm]	90
dn1 [mm]	
SDR	
PN	10/16
MATERIAL	ALUMINIUM
TRADEMARK	
MANUFACTURING TYPE	
USE	WATER-GAS
QUANTITY PER BOX	1

dn	[mm]	90	HOLES N.	8
D ALUMINIUM	[mm]	80	PN	PN 10/16
C	[mm]	108		
s	[mm]	22		
a	[mm]	200		
k	[mm]	160		
f	[mm]	18	WEIGHT	[g] 980

Tolerance: +/- 5% excluding dn

NOTE:

MARKING AND LABEL on fitting

DN80/DE90 PN10/PN16

STANDARDS AND APPROVALS

ISO 9624

INFOS

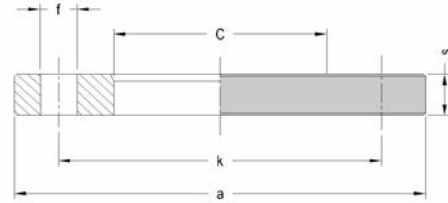
- Aluminium flange not painted
- Mating dimensions according to standard EN 1092-1 with internal diameter according to standard ISO 9624
- Flanges suitable both PN 10 and PN 16
- The pipeline diameter identifies the choice of the flange

All dimensions are in millimeters and are intended as nominal and standard sizes: weights are in grams. EUROSTANDARD reserves the right to change geometries and dimensions of any product.

PRODUCT DETAILS



DIMENSIONS AND WEIGHT



ITEM	2040100110
dn [mm]	110
dn1 [mm]	
SDR	
PN	10/16
MATERIAL	ALUMINIUM
TRADEMARK	
MANUFACTURING TYPE	
USE	WATER-GAS
QUANTITY PER BOX	1

dn	[mm]	110	HOLES N.	8
D ALUMINIUM	[mm]	100	PN	PN 10/16
C	[mm]	128		
s	[mm]	22		
a	[mm]	220		
k	[mm]	180		
f	[mm]	18	WEIGHT	[g] 1130

Tolerance: +/- 5% excluding dn

NOTE:

MARKING AND LABEL on fitting

DN100/DE110 PN10/PN16

STANDARDS AND APPROVALS

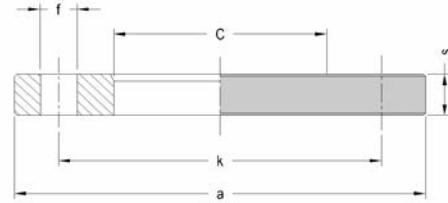
ISO 9624

INFOS

- Aluminium flange not painted
- Mating dimensions according to standard EN 1092-1 with internal diameter according to standard ISO 9624
- Flanges suitable both PN 10 and PN 16
- The pipeline diameter identifies the choice of the flange

All dimensions are in millimeters and are intended as nominal and standard sizes: weights are in grams. EUROSTANDARD reserves the right to change geometries and dimensions of any product.

PRODUCT DETAILS

DIMENSIONS AND WEIGHT


ITEM	2040100125
dn [mm]	125
dn1 [mm]	
SDR	
PN	10/16
MATERIAL	ALUMINIUM
TRADEMARK	
MANUFACTURING TYPE	
USE	WATER-GAS
QUANTITY PER BOX	1
NOTE:	

dn	[mm]	125	HOLES N.	8
D ALUMINIUM	[mm]	100	PN	PN 10/16
C	[mm]	135		
s	[mm]	22		
a	[mm]	220		
k	[mm]	180		
f	[mm]	18	WEIGHT	[g] 1030
Tolerance: +/- 5% excluding dn				

MARKING AND LABEL on fitting

DN100/DE125 PN10/PN16

STANDARDS AND APPROVALS

ISO 9624

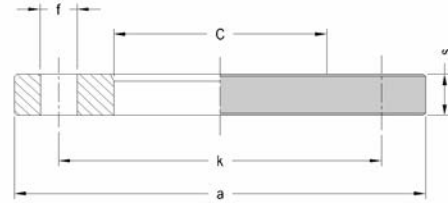
INFOS

- Aluminium flange not painted
- Mating dimensions according to standard EN 1092-1 with internal diameter according to standard ISO 9624
- Flanges suitable both PN 10 and PN 16
- The pipeline diameter identifies the choice of the flange

PRODUCT DETAILS



DIMENSIONS AND WEIGHT



ITEM	2040100140
dn [mm]	140
dn1 [mm]	
SDR	
PN	10/16
MATERIAL	ALUMINIUM
TRADEMARK	
MANUFACTURING TYPE	
USE	WATER-GAS
QUANTITY PER BOX	1

dn	[mm]	140	HOLES N.	8
D ALUMINIUM	[mm]	125	PN	PN 10/16
C	[mm]	158		
s	[mm]	22		
a	[mm]	250		
k	[mm]	210		
f	[mm]	18	WEIGHT	[g] 1350

Tolerance: +/- 5% excluding dn

NOTE:

MARKING AND LABEL on fitting

DN125/DE140 PN10/PN16

STANDARDS AND APPROVALS

ISO 9624

INFOS

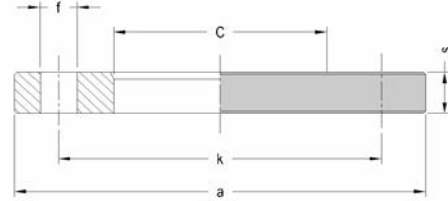
- Aluminium flange not painted
- Mating dimensions according to standard EN 1092-1 with internal diameter according to standard ISO 9624
- Flanges suitable both PN 10 and PN 16
- The pipeline diameter identifies the choice of the flange

All dimensions are in millimeters and are intended as nominal and standard sizes: weights are in grams. EUROSTANDARD reserves the right to change geometries and dimensions of any product.

PRODUCT DETAILS



DIMENSIONS AND WEIGHT



ITEM	2040100160
dn [mm]	160
dn1 [mm]	
SDR	
PN	10/16
MATERIAL	ALUMINIUM
TRADEMARK	
MANUFACTURING TYPE	
USE	WATER-GAS
QUANTITY PER BOX	1

dn	[mm]	160	HOLES N.	8
D ALUMINIUM	[mm]	150	PN	PN 10/16
C	[mm]	178		
s	[mm]	24		
a	[mm]	285		
k	[mm]	240		
f	[mm]	22	WEIGHT	[g] 1820

Tolerance: +/- 5% excluding dn

NOTE:

MARKING AND LABEL on fitting

DN150/DE160 PN10/PN16

STANDARDS AND APPROVALS

ISO 9624

INFOS

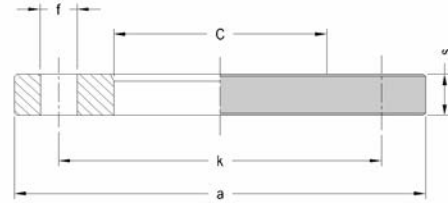
- Aluminium flange not painted
- Mating dimensions according to standard EN 1092-1 with internal diameter according to standard ISO 9624
- Flanges suitable both PN 10 and PN 16
- The pipeline diameter identifies the choice of the flange

All dimensions are in millimeters and are intended as nominal and standard sizes: weights are in grams. EUROSTANDARD reserves the right to change geometries and dimensions of any product.

PRODUCT DETAILS



DIMENSIONS AND WEIGHT



ITEM	2040100180
dn [mm]	180
dn1 [mm]	
SDR	
PN	10/16
MATERIAL	ALUMINIUM
TRADEMARK	
MANUFACTURING TYPE	
USE	WATER-GAS
QUANTITY PER BOX	1
NOTE:	

dn	[mm]	180	HOLES N.	8
D ALUMINIUM	[mm]	150	PN	PN 10/16
C	[mm]	188		
s	[mm]	24		
a	[mm]	285		
k	[mm]	240		
f	[mm]	22	WEIGHT	[g] 1640
Tolerance: +/- 5% excluding dn				

MARKING AND LABEL on fitting

DN150/DE180 PN10/PN16

STANDARDS AND APPROVALS

ISO 9624

INFOS

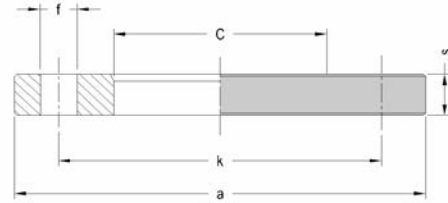
- Aluminium flange not painted
- Mating dimensions according to standard EN 1092-1 with internal diameter according to standard ISO 9624
- Flanges suitable both PN 10 and PN 16
- The pipeline diameter identifies the choice of the flange

All dimensions are in millimeters and are intended as nominal and standard sizes: weights are in grams. EUROSTANDARD reserves the right to change geometries and dimensions of any product.

PRODUCT DETAILS



DIMENSIONS AND WEIGHT



ITEM	2040100200
dn [mm]	200
dn1 [mm]	
SDR	
PN	10
MATERIAL	ALUMINIUM
TRADEMARK	
MANUFACTURING TYPE	
USE	WATER-GAS
QUANTITY PER BOX	1

dn	[mm]	200	HOLES N.	8
D ALUMINIUM	[mm]	200	PN	PN10
C	[mm]	235		
s	[mm]	26		
a	[mm]	340		
k	[mm]	295		
f	[mm]	22	WEIGHT	[g] 2300

Tolerance: +/- 5% excluding dn

NOTE:

MARKING AND LABEL on fitting

DN200/DE200 PN10

STANDARDS AND APPROVALS

ISO 9624

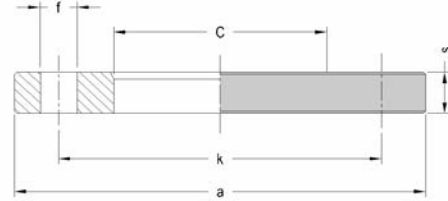
INFOS

- Aluminium flange not painted
- Mating dimensions according to standard EN 1092-1 with internal diameter according to standard ISO 9624
- The pipeline diameter identifies the choice of the flange

PRODUCT DETAILS



DIMENSIONS AND WEIGHT



ITEM	2040100225
dn [mm]	225
dn1 [mm]	
SDR	
PN	10
MATERIAL	ALUMINIUM
TRADEMARK	
MANUFACTURING TYPE	
USE	WATER-GAS
QUANTITY PER BOX	1

dn	[mm]	225	HOLES N.	8
D ALUMINIUM	[mm]	200	PN	PN10
C	[mm]	238		
s	[mm]	26		
a	[mm]	340		
k	[mm]	295		
f	[mm]	22	WEIGHT	[g] 2250

Tolerance: +/- 5% excluding dn

MARKING AND LABEL on fitting

DN200/DE225 PN10

STANDARDS AND APPROVALS

ISO 9624

INFOS

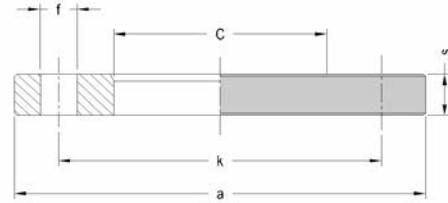
- Aluminium flange not painted
- Mating dimensions according to standard EN 1092-1 with internal diameter according to standard ISO 9624
- The pipeline diameter identifies the choice of the flange

All dimensions are in millimeters and are intended as nominal and standard sizes: weights are in grams. EUROSTANDARD reserves the right to change geometries and dimensions of any product.

PRODUCT DETAILS



DIMENSIONS AND WEIGHT



ITEM	2040100250
dn [mm]	250
dn1 [mm]	
SDR	
PN	10
MATERIAL	ALUMINIUM
TRADEMARK	
MANUFACTURING TYPE	
USE	WATER-GAS
QUANTITY PER BOX	1

dn	[mm]	250	HOLES N.	12
D ALUMINIUM	[mm]	250	PN	PN10
C	[mm]	288		
s	[mm]	28		
a	[mm]	395		
k	[mm]	350		
f	[mm]	22	WEIGHT	[g] 3030

Tolerance: +/- 5% excluding dn

NOTE:

MARKING AND LABEL on fitting

DN250/DE250 PN10

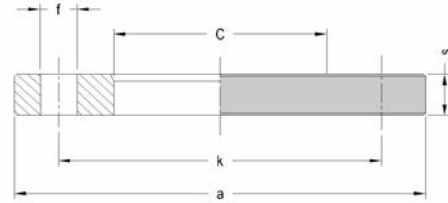
STANDARDS AND APPROVALS

ISO 9624

INFOS

- Aluminium flange not painted
- Mating dimensions according to standard EN 1092-1 with internal diameter according to standard ISO 9624
- The pipeline diameter identifies the choice of the flange

PRODUCT DETAILS

DIMENSIONS AND WEIGHT


ITEM	2040100280
dn [mm]	280
dn1 [mm]	
SDR	
PN	10
MATERIAL	ALUMINIUM
TRADEMARK	
MANUFACTURING TYPE	
USE	WATER-GAS
QUANTITY PER BOX	1

dn	[mm]	280	HOLES N.	12
D ALUMINIUM	[mm]	250	PN	PN10
C	[mm]	294		
s	[mm]	28		
a	[mm]	395		
k	[mm]	350		
f	[mm]	22	WEIGHT	[g] 2840

Tolerance: +/- 5% excluding dn

NOTE:

MARKING AND LABEL on fitting

DN250/DE280 PN10

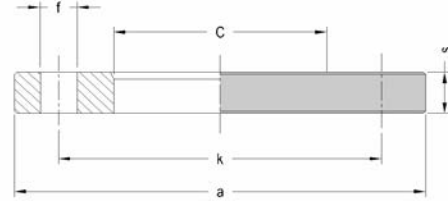
STANDARDS AND APPROVALS

ISO 9624

INFOS

- Aluminium flange not painted
- Mating dimensions according to standard EN 1092-1 with internal diameter according to standard ISO 9624
- The pipeline diameter identifies the choice of the flange

PRODUCT DETAILS

DIMENSIONS AND WEIGHT


ITEM	2040100315
dn [mm]	315
dn1 [mm]	
SDR	
PN	10
MATERIAL	ALUMINIUM
TRADEMARK	
MANUFACTURING TYPE	
USE	WATER-GAS
QUANTITY PER BOX	1
NOTE:	

dn	[mm]	315	HOLES N.	12
D ALUMINIUM	[mm]	300	PN	PN10
C	[mm]	338		
s	[mm]	28		
a	[mm]	445		
k	[mm]	400		
f	[mm]	22	WEIGHT	[g] 3500
Tolerance: +/- 5% excluding dn				

MARKING AND LABEL on fitting

DN300/DE315 PN10

STANDARDS AND APPROVALS

ISO 9624

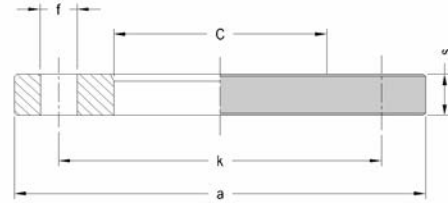
INFOS

- Aluminium flange not painted
- Mating dimensions according to standard EN 1092-1 with internal diameter according to standard ISO 9624
- The pipeline diameter identifies the choice of the flange

PRODUCT DETAILS



DIMENSIONS AND WEIGHT



ITEM	2040160200
dn [mm]	200
dn1 [mm]	
SDR	
PN	16
MATERIAL	ALUMINIUM
TRADEMARK	
MANUFACTURING TYPE	
USE	WATER-GAS
QUANTITY PER BOX	1

dn	[mm]	200	HOLES N.	12
D ALUMINIUM	[mm]	200	PN	PN16
C	[mm]	235		
s	[mm]	26		
a	[mm]	340		
k	[mm]	295		
f	[mm]	22	WEIGHT	[g] 2420

Tolerance: +/- 5% excluding dn

MARKING AND LABEL on fitting

DN200/DE200 PN16

STANDARDS AND APPROVALS

ISO 9624

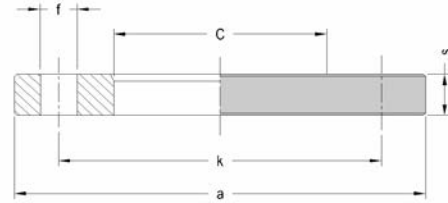
INFOS

- Aluminium flange not painted
- Mating dimensions according to standard EN 1092-1 with internal diameter according to standard ISO 9624
- The pipeline diameter identifies the choice of the flange

PRODUCT DETAILS



DIMENSIONS AND WEIGHT



ITEM	2040160225
dn [mm]	225
dn1 [mm]	
SDR	
PN	16
MATERIAL	ALUMINIUM
TRADEMARK	
MANUFACTURING TYPE	
USE	WATER-GAS
QUANTITY PER BOX	1
NOTE:	

dn [mm]	225	HOLES N.	12
D ALUMINIUM [mm]	200	PN	PN16
C [mm]	238		
s [mm]	26		
a [mm]	340		
k [mm]	295		
f [mm]	22	WEIGHT [g]	2310
Tolerance: +/- 5% excluding dn			

MARKING AND LABEL on fitting

DN200/DE225 PN16

STANDARDS AND APPROVALS

ISO 9624

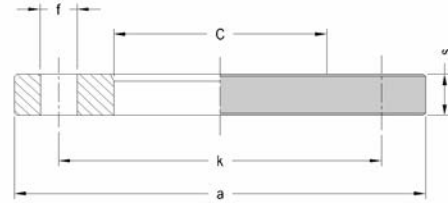
INFOS

- Aluminium flange not painted
- Mating dimensions according to standard EN 1092-1 with internal diameter according to standard ISO 9624
- The pipeline diameter identifies the choice of the flange

PRODUCT DETAILS



DIMENSIONS AND WEIGHT



ITEM	2040160250
dn [mm]	250
dn1 [mm]	
SDR	
PN	16
MATERIAL	ALUMINIUM
TRADEMARK	
MANUFACTURING TYPE	
USE	WATER-GAS
QUANTITY PER BOX	1

dn	[mm]	250	HOLES N.	12
D ALUMINIUM	[mm]	250	PN	PN16
C	[mm]	288		
s	[mm]	28		
a	[mm]	405		
k	[mm]	355		
f	[mm]	25	WEIGHT	[g] 3500

Tolerance: +/- 5% excluding dn

MARKING AND LABEL on fitting

DN250/DE250 PN16

STANDARDS AND APPROVALS

ISO 9624

INFOS

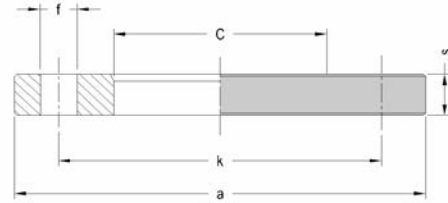
- Aluminium flange not painted
- Mating dimensions according to standard EN 1092-1 with internal diameter according to standard ISO 9624
- The pipeline diameter identifies the choice of the flange

All dimensions are in millimeters and are intended as nominal and standard sizes: weights are in grams. EUROSTANDARD reserves the right to change geometries and dimensions of any product.

PRODUCT DETAILS



DIMENSIONS AND WEIGHT



ITEM	2040160280
dn [mm]	280
dn1 [mm]	
SDR	
PN	16
MATERIAL	ALUMINIUM
TRADEMARK	
MANUFACTURING TYPE	
USE	WATER-GAS
QUANTITY PER BOX	1

dn	[mm]	280	HOLES N.	12
D ALUMINIUM	[mm]	250	PN	PN16
C	[mm]	294		
s	[mm]	28		
a	[mm]	405		
k	[mm]	355		
f	[mm]	25	WEIGHT	[g] 3420

Tolerance: +/- 5% excluding dn

NOTE:

MARKING AND LABEL on fitting

DN250/DE280 PN16

STANDARDS AND APPROVALS

ISO 9624

INFOS

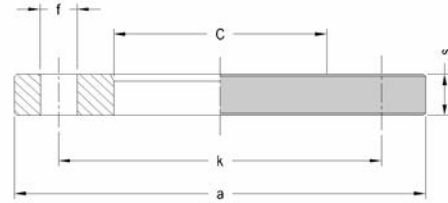
- Aluminium flange not painted
- Mating dimensions according to standard EN 1092-1 with internal diameter according to standard ISO 9624
- The pipeline diameter identifies the choice of the flange

All dimensions are in millimeters and are intended as nominal and standard sizes: weights are in grams. EUROSTANDARD reserves the right to change geometries and dimensions of any product.

PRODUCT DETAILS



DIMENSIONS AND WEIGHT



ITEM	2040160315
dn [mm]	315
dn1 [mm]	
SDR	
PN	16
MATERIAL	ALUMINIUM
TRADEMARK	
MANUFACTURING TYPE	
USE	WATER-GAS
QUANTITY PER BOX	1

dn	[mm]	315	HOLES N.	12
D ALUMINIUM	[mm]	300	PN	PN16
C	[mm]	338		
s	[mm]	32		
a	[mm]	460		
k	[mm]	410		
f	[mm]	25	WEIGHT	[g] 5000

Tolerance: +/- 5% excluding dn

MARKING AND LABEL on fitting

DN300/DE315 PN16

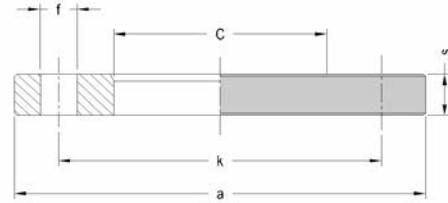
STANDARDS AND APPROVALS

ISO 9624

INFOS

- Aluminium flange not painted
- Mating dimensions according to standard EN 1092-1 with internal diameter according to standard ISO 9624
- The pipeline diameter identifies the choice of the flange

PRODUCT DETAILS

DIMENSIONS AND WEIGHT


ITEM	2045100200
dn [mm]	200
dn1 [mm]	
SDR	
PN	10
MATERIAL	STEEL
TRADEMARK	
MANUFACTURING TYPE	
USE	WATER-GAS
QUANTITY PER BOX	1
NOTE:	

dn	[mm]	200	HOLES N.	8
D STEEL	[mm]	200	PN	PN 10
C	[mm]	235		
s	[mm]	24		
a	[mm]	340		
k	[mm]	295		
f	[mm]	22	WEIGHT	[g] 8410
Tolerance: +/- 5% excluding dn				

MARKING AND LABEL on fitting

EN1092-1/01A DN200 PN10

STANDARDS AND APPROVALS

 EN 1092-1
 ISO 9624

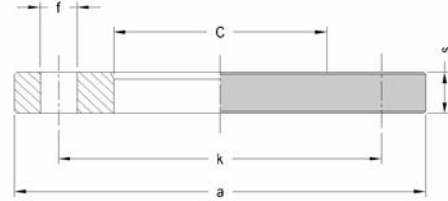
INFOS

- Steel flange not painted
- Mating dimensions according to standard EN 1092-1 with internal diameter according to standard ISO 9624
- The pipeline diameter identifies the choice of the flange

PRODUCT DETAILS



DIMENSIONS AND WEIGHT



ITEM	2045100225
dn [mm]	225
dn1 [mm]	
SDR	
PN	10
MATERIAL	STEEL
TRADEMARK	
MANUFACTURING TYPE	
USE	WATER-GAS
QUANTITY PER BOX	1
NOTE:	

dn	[mm]	225	HOLES N.	8
D STEEL	[mm]	200	PN	PN 10
C	[mm]	238		
s	[mm]	24		
a	[mm]	340		
k	[mm]	295		
f	[mm]	22	WEIGHT	[g] 8200
Tolerance: +/- 5% excluding dn				

MARKING AND LABEL on fitting

EN1092-1/01A DN200 PN10

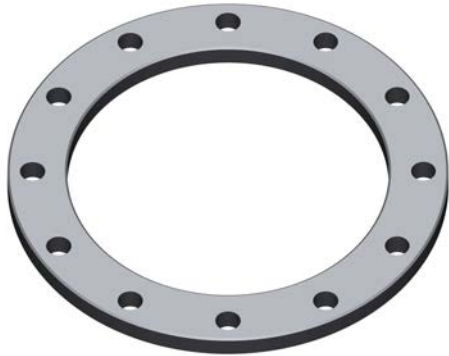
STANDARDS AND APPROVALS

EN 1092-1
ISO 9624

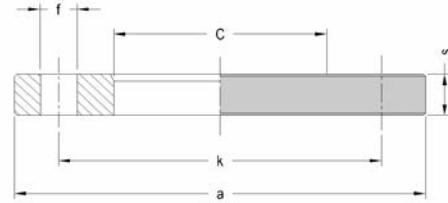
INFOS

- Steel flange not painted
- Mating dimensions according to standard EN 1092-1 with internal diameter according to standard ISO 9624
- The pipeline diameter identifies the choice of the flange

PRODUCT DETAILS



DIMENSIONS AND WEIGHT



ITEM	2045100250
dn [mm]	250
dn1 [mm]	
SDR	
PN	10
MATERIAL	STEEL
TRADEMARK	
MANUFACTURING TYPE	
USE	WATER-GAS
QUANTITY PER BOX	1

dn	[mm]	250	HOLES N.	12
D STEEL	[mm]	250	PN	PN 10
C	[mm]	288		
s	[mm]	26		
a	[mm]	395		
k	[mm]	350		
f	[mm]	22	WEIGHT	[g] 10840

Tolerance: +/- 5% excluding dn

MARKING AND LABEL on fitting

EN1092-1/01A DN250 PN10

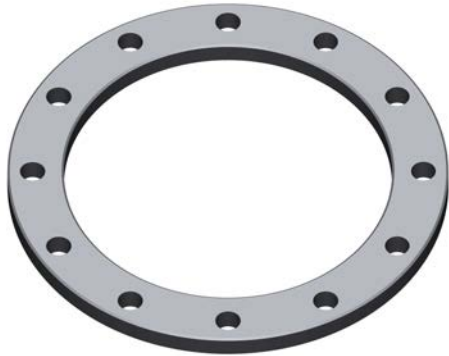
STANDARDS AND APPROVALS

EN 1092-1
ISO 9624

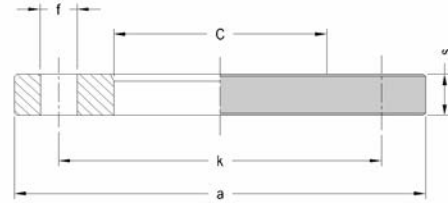
INFOS

- Steel flange not painted
- Mating dimensions according to standard EN 1092-1 with internal diameter according to standard ISO 9624
- The pipeline diameter identifies the choice of the flange

PRODUCT DETAILS



DIMENSIONS AND WEIGHT



ITEM	2045100280
dn [mm]	280
dn1 [mm]	
SDR	
PN	10
MATERIAL	STEEL
TRADEMARK	
MANUFACTURING TYPE	
USE	WATER-GAS
QUANTITY PER BOX	1

dn	[mm]	280	HOLES N.	12
D STEEL	[mm]	250	PN	PN 10
C	[mm]	294		
s	[mm]	26		
a	[mm]	395		
k	[mm]	350		
f	[mm]	22	WEIGHT	[g] 10280

Tolerance: +/- 5% excluding dn

NOTE:

MARKING AND LABEL on fitting

EN1092-1/01A DN250 PN10

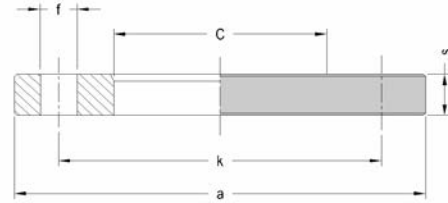
STANDARDS AND APPROVALS

EN 1092-1
ISO 9624

INFOS

- Steel flange not painted
- Mating dimensions according to standard EN 1092-1 with internal diameter according to standard ISO 9624
- The pipeline diameter identifies the choice of the flange

PRODUCT DETAILS

DIMENSIONS AND WEIGHT


ITEM	2045100315
dn [mm]	315
dn1 [mm]	
SDR	
PN	10
MATERIAL	STEEL
TRADEMARK	
MANUFACTURING TYPE	
USE	WATER-GAS
QUANTITY PER BOX	1

dn	[mm]	315	HOLES N.	12
D STEEL	[mm]	300	PN	PN 10
C	[mm]	338		
s	[mm]	26		
a	[mm]	445		
k	[mm]	400		
f	[mm]	22	WEIGHT	[g] 12560

Tolerance: +/- 5% excluding dn

NOTE:

MARKING AND LABEL on fitting

EN1092-1/01A DN300 PN10

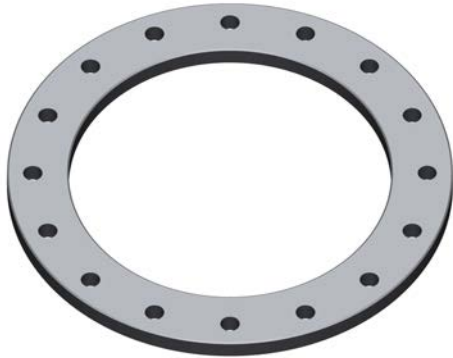
STANDARDS AND APPROVALS

 EN 1092-1
 ISO 9624

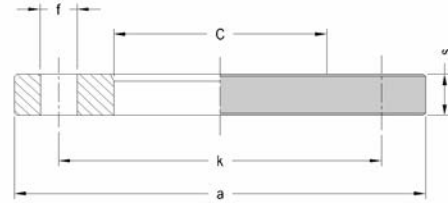
INFOS

- Steel flange not painted
- Mating dimensions according to standard EN 1092-1 with internal diameter according to standard ISO 9624
- The pipeline diameter identifies the choice of the flange

PRODUCT DETAILS



DIMENSIONS AND WEIGHT



ITEM	2045100355
dn [mm]	355
dn1 [mm]	
SDR	
PN	10
MATERIAL	STEEL
TRADEMARK	
MANUFACTURING TYPE	
USE	WATER-GAS
QUANTITY PER BOX	1

dn	[mm]	355	HOLES N.	16
D STEEL	[mm]	350	PN	PN 10
C	[mm]	376		
s	[mm]	30		
a	[mm]	505		
k	[mm]	460		
f	[mm]	22	WEIGHT	[g] 12560

Tolerance: +/- 5% excluding dn

NOTE:

MARKING AND LABEL on fitting

EN1092-1/01A DN350 PN10

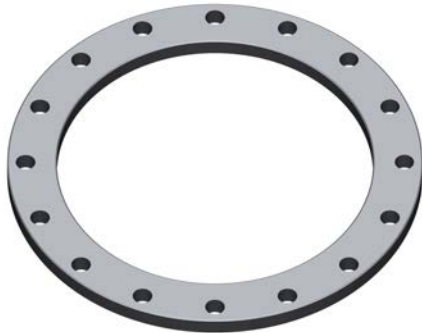
STANDARDS AND APPROVALS

EN 1092-1
ISO 9624

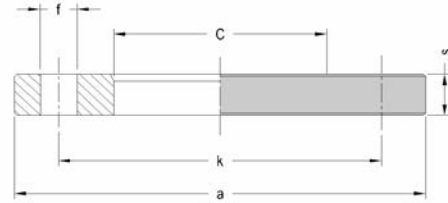
INFOS

- Steel flange not painted
- Mating dimensions according to standard EN 1092-1 with internal diameter according to standard ISO 9624
- The pipeline diameter identifies the choice of the flange

PRODUCT DETAILS



DIMENSIONS AND WEIGHT



ITEM	2045100400
dn [mm]	400
dn1 [mm]	
SDR	
PN	10
MATERIAL	STEEL
TRADEMARK	
MANUFACTURING TYPE	
USE	WATER-GAS
QUANTITY PER BOX	1

dn	[mm]	400	HOLES N.	16
D STEEL	[mm]	400	PN	PN 10
C	[mm]	430		
s	[mm]	32		
a	[mm]	565		
k	[mm]	515		
f	[mm]	26	WEIGHT	[g] 38000

Tolerance: +/- 5% excluding dn

NOTE:

MARKING AND LABEL on fitting

EN1092-1/01A DN400 PN10

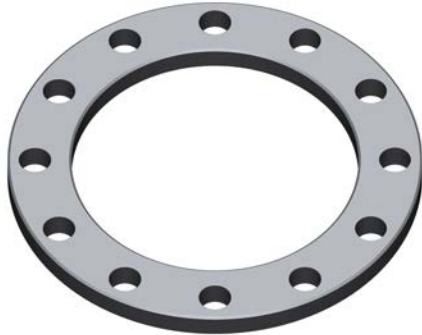
STANDARDS AND APPROVALS

EN 1092-1
ISO 9624

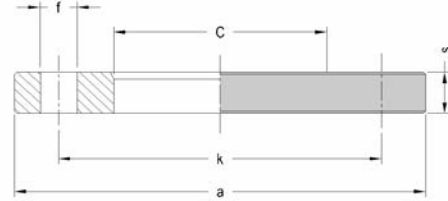
INFOS

- Steel flange not painted
- Mating dimensions according to standard EN 1092-1 with internal diameter according to standard ISO 9624
- The pipeline diameter identifies the choice of the flange

PRODUCT DETAILS



DIMENSIONS AND WEIGHT



ITEM	2045160200
dn [mm]	200
dn1 [mm]	
SDR	
PN	16
MATERIAL	STEEL
TRADEMARK	
MANUFACTURING TYPE	
USE	WATER-GAS
QUANTITY PER BOX	1

dn	[mm]	200	HOLES N.	12
D STEEL	[mm]	200	PN	PN 16
C	[mm]	235		
s	[mm]	26		
a	[mm]	340		
k	[mm]	295		
f	[mm]	22	WEIGHT	[g] 8790

Tolerance: +/- 5% excluding dn

MARKING AND LABEL on fitting

EN1092-1/01A DN200 PN16

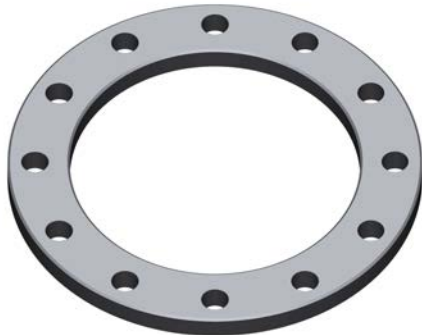
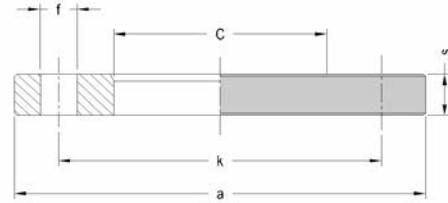
STANDARDS AND APPROVALS

EN 1092-1
ISO 9624

INFOS

- Steel flange not painted
- Mating dimensions according to standard EN 1092-1 with internal diameter according to standard ISO 9624
- The pipeline diameter identifies the choice of the flange

All dimensions are in millimeters and are intended as nominal and standard sizes: weights are in grams.
EUROSTANDARD reserves the right to change geometries and dimensions of any product.

PRODUCT DETAILS

DIMENSIONS AND WEIGHT


ITEM	2045160225
dn [mm]	225
dn1 [mm]	
SDR	
PN	16
MATERIAL	STEEL
TRADEMARK	
MANUFACTURING TYPE	
USE	WATER-GAS
QUANTITY PER BOX	1

dn	[mm]	225	HOLES N.	12
D STEEL	[mm]	200	PN	PN 16
C	[mm]	238		
s	[mm]	26		
a	[mm]	340		
k	[mm]	295		
f	[mm]	22	WEIGHT	[g] 8570

Tolerance: +/- 5% excluding dn

NOTE:

MARKING AND LABEL on fitting

EN1092-1/01A DN200 PN16

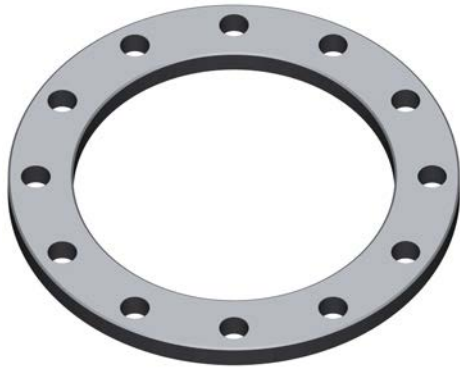
STANDARDS AND APPROVALS

EN 1092-1
ISO 9624

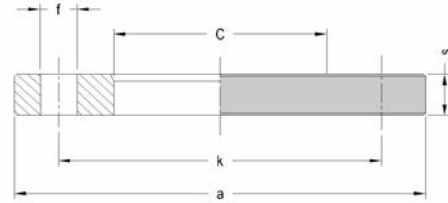
INFOS

- Steel flange not painted
- Mating dimensions according to standard EN 1092-1 with internal diameter according to standard ISO 9624
- The pipeline diameter identifies the choice of the flange

PRODUCT DETAILS



DIMENSIONS AND WEIGHT



ITEM	2045160250
dn [mm]	250
dn1 [mm]	
SDR	
PN	16
MATERIAL	STEEL
TRADEMARK	
MANUFACTURING TYPE	
USE	WATER-GAS
QUANTITY PER BOX	1

dn	[mm]	250	HOLES N.	12
D STEEL	[mm]	250	PN	PN 16
C	[mm]	288		
s	[mm]	29		
a	[mm]	405		
k	[mm]	355		
f	[mm]	26	WEIGHT	[g] 13220

Tolerance: +/- 5% excluding dn

NOTE:

MARKING AND LABEL on fitting

EN1092-1/01A DN250 PN16

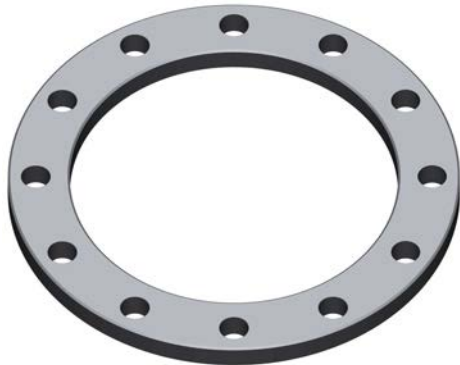
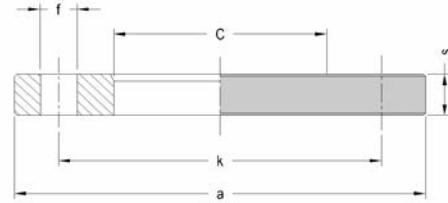
STANDARDS AND APPROVALS

EN 1092-1
ISO 9624

INFOS

- Steel flange not painted
- Mating dimensions according to standard EN 1092-1 with internal diameter according to standard ISO 9624
- The pipeline diameter identifies the choice of the flange

All dimensions are in millimeters and are intended as nominal and standard sizes: weights are in grams.
EUROSTANDARD reserves the right to change geometries and dimensions of any product.

PRODUCT DETAILS

DIMENSIONS AND WEIGHT


ITEM	2045160280
dn [mm]	280
dn1 [mm]	
SDR	
PN	16
MATERIAL	STEEL
TRADEMARK	
MANUFACTURING TYPE	
USE	WATER-GAS
QUANTITY PER BOX	1

dn	[mm]	280	HOLES N.	12
D STEEL	[mm]	250	PN	PN 16
C	[mm]	294		
s	[mm]	29		
a	[mm]	405		
k	[mm]	355		
f	[mm]	26	WEIGHT	[g] 12590

Tolerance: +/- 5% excluding dn

NOTE:

MARKING AND LABEL on fitting

EN1092-1/01A DN250 PN16

STANDARDS AND APPROVALS

 EN 1092-1
 ISO 9624

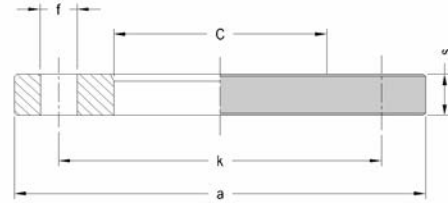
INFOS

- Steel flange not painted
- Mating dimensions according to standard EN 1092-1 with internal diameter according to standard ISO 9624
- The pipeline diameter identifies the choice of the flange

PRODUCT DETAILS



DIMENSIONS AND WEIGHT



ITEM	2045160315
dn [mm]	315
dn1 [mm]	
SDR	
PN	16
MATERIAL	STEEL
TRADEMARK	
MANUFACTURING TYPE	
USE	WATER-GAS
QUANTITY PER BOX	1

dn	[mm]	315	HOLES N.	12
D STEEL	[mm]	300	PN	PN 16
C	[mm]	338		
s	[mm]	32		
a	[mm]	460		
k	[mm]	410		
f	[mm]	26	WEIGHT	[g] 17810

Tolerance: +/- 5% excluding dn

NOTE:

MARKING AND LABEL on fitting

EN1092-1/01A DN300 PN16

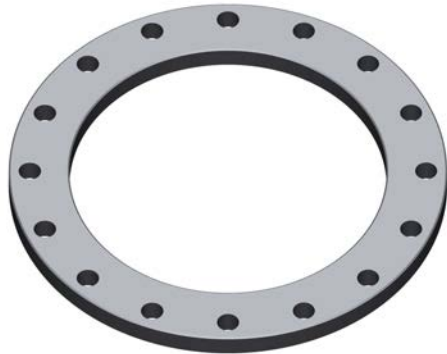
STANDARDS AND APPROVALS

EN 1092-1
ISO 9624

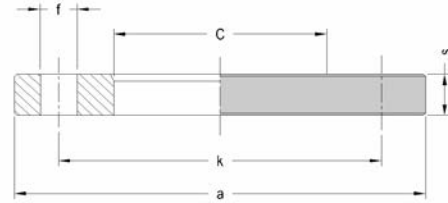
INFOS

- Steel flange not painted
- Mating dimensions according to standard EN 1092-1 with internal diameter according to standard ISO 9624
- The pipeline diameter identifies the choice of the flange

PRODUCT DETAILS



DIMENSIONS AND WEIGHT



ITEM	2045160355
dn [mm]	355
dn1 [mm]	
SDR	
PN	16
MATERIAL	STEEL
TRADEMARK	
MANUFACTURING TYPE	
USE	WATER-GAS
QUANTITY PER BOX	1

dn	[mm]	355	HOLES N.	16
D STEEL	[mm]	350	PN	PN 16
C	[mm]	376		
s	[mm]	35		
a	[mm]	520		
k	[mm]	470		
f	[mm]	26	WEIGHT	[g] 25430

Tolerance: +/- 5% excluding dn

NOTE:

MARKING AND LABEL on fitting

EN1092-1/01A DN350 PN16

STANDARDS AND APPROVALS

EN 1092-1
ISO 9624

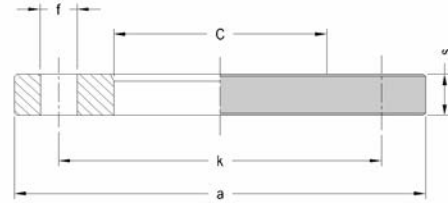
INFOS

- Steel flange not painted
- Mating dimensions according to standard EN 1092-1 with internal diameter according to standard ISO 9624
- The pipeline diameter identifies the choice of the flange

PRODUCT DETAILS



DIMENSIONS AND WEIGHT



ITEM	2045160400
dn [mm]	400
dn1 [mm]	
SDR	
PN	16
MATERIAL	STEEL
TRADEMARK	
MANUFACTURING TYPE	
USE	WATER-GAS
QUANTITY PER BOX	1

dn	[mm]	400	HOLES N.	16
D STEEL	[mm]	400	PN	PN 16
C	[mm]	430		
s	[mm]	38		
a	[mm]	580		
k	[mm]	525		
f	[mm]	30	WEIGHT	[g] 44000

Tolerance: +/- 5% excluding dn

MARKING AND LABEL on fitting

EN1092-1/01A DN400 PN16

STANDARDS AND APPROVALS

EN 1092-1
ISO 9624

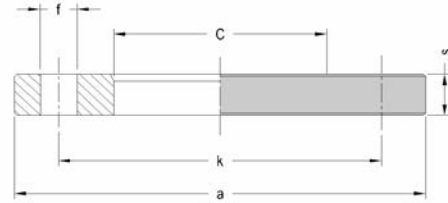
INFOS

- Steel flange not painted
- Mating dimensions according to standard EN 1092-1 with internal diameter according to standard ISO 9624
- The pipeline diameter identifies the choice of the flange

PRODUCT DETAILS



DIMENSIONS AND WEIGHT



ITEM	2045250063
dn [mm]	63
dn1 [mm]	
SDR	
PN	25
MATERIAL	STEEL
TRADEMARK	
MANUFACTURING TYPE	
USE	WATER-GAS
QUANTITY PER BOX	1

dn	[mm]	63	HOLES N.	4
D STEEL	[mm]	50	PN	PN 25
C	[mm]	78		
s	[mm]	20		
a	[mm]	165		
k	[mm]	125		
f	[mm]	18	WEIGHT	[g] 2340

Tolerance: +/- 5% excluding dn

NOTE:

MARKING AND LABEL on fitting

EN1092-1/01A DN50 PN25

STANDARDS AND APPROVALS

EN 1092-1
ISO 9624

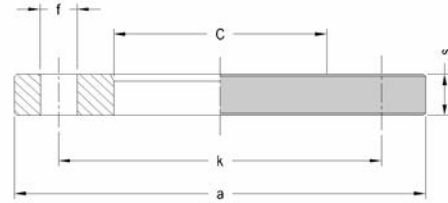
INFOS

- Steel flange not painted
- Mating dimensions according to standard EN 1092-1 with internal diameter according to standard ISO 9624
- The pipeline diameter identifies the choice of the flange

PRODUCT DETAILS



DIMENSIONS AND WEIGHT



ITEM	2045250075
dn [mm]	75
dn1 [mm]	
SDR	
PN	25
MATERIAL	STEEL
TRADEMARK	
MANUFACTURING TYPE	
USE	WATER-GAS
QUANTITY PER BOX	1
NOTE:	

dn	[mm]	75	HOLES N.	8
D STEEL	[mm]	65	PN	PN 25
C	[mm]	92		
s	[mm]	22		
a	[mm]	185		
k	[mm]	145		
f	[mm]	18	WEIGHT	[g] 3000
Tolerance: +/- 5% excluding dn				

MARKING AND LABEL on fitting

EN1092-1/01A DN65 PN25

STANDARDS AND APPROVALS

EN 1092-1
ISO 9624

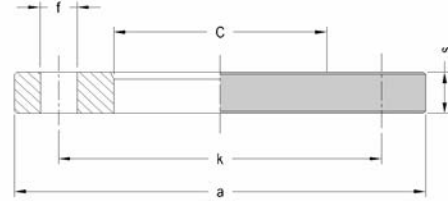
INFOS

- Steel flange not painted
- Mating dimensions according to standard EN 1092-1 with internal diameter according to standard ISO 9624
- The pipeline diameter identifies the choice of the flange

PRODUCT DETAILS



DIMENSIONS AND WEIGHT



ITEM	2045250090
dn [mm]	90
dn1 [mm]	
SDR	
PN	25
MATERIAL	STEEL
TRADEMARK	
MANUFACTURING TYPE	
USE	WATER-GAS
QUANTITY PER BOX	1
NOTE:	

dn	[mm]	90	HOLES N.	8
D STEEL	[mm]	80	PN	PN 25
C	[mm]	108		
s	[mm]	24		
a	[mm]	200		
k	[mm]	160		
f	[mm]	18	WEIGHT	[g] 4000
Tolerance: +/- 5% excluding dn				

MARKING AND LABEL on fitting

EN1092-1/01A DN80 PN25

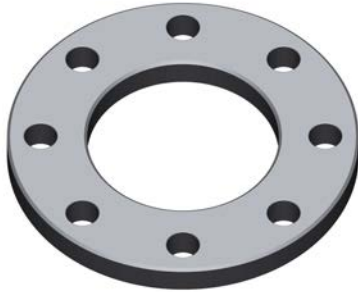
STANDARDS AND APPROVALS

EN 1092-1
ISO 9624

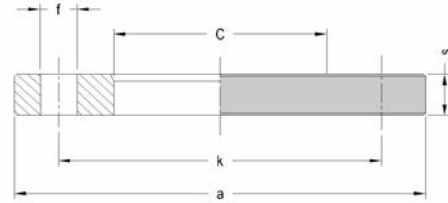
INFOS

- Steel flange not painted
- Mating dimensions according to standard EN 1092-1 with internal diameter according to standard ISO 9624
- The pipeline diameter identifies the choice of the flange

PRODUCT DETAILS



DIMENSIONS AND WEIGHT



ITEM	2045250110
dn [mm]	110
dn1 [mm]	
SDR	
PN	25
MATERIAL	STEEL
TRADEMARK	
MANUFACTURING TYPE	
USE	WATER-GAS
QUANTITY PER BOX	1
NOTE:	

dn	[mm]	110	HOLES N.	8
D STEEL	[mm]	100	PN	PN 25
C	[mm]	128		
s	[mm]	26		
a	[mm]	235		
k	[mm]	190		
f	[mm]	22	WEIGHT	[g] 5300
Tolerance: +/- 5% excluding dn				

MARKING AND LABEL on fitting

EN1092-1/01A DN100 PN25

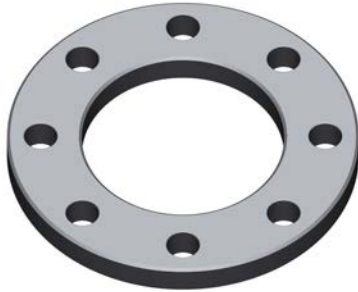
STANDARDS AND APPROVALS

EN 1092-1
ISO 9624

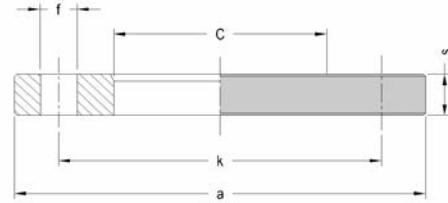
INFOS

- Steel flange not painted
- Mating dimensions according to standard EN 1092-1 with internal diameter according to standard ISO 9624
- The pipeline diameter identifies the choice of the flange

PRODUCT DETAILS



DIMENSIONS AND WEIGHT



ITEM	2045250125
dn [mm]	125
dn1 [mm]	
SDR	
PN	25
MATERIAL	STEEL
TRADEMARK	
MANUFACTURING TYPE	
USE	WATER-GAS
QUANTITY PER BOX	1

dn	[mm]	125	HOLES N.	8
D STEEL	[mm]	100	PN	PN 25
C	[mm]	135		
s	[mm]	26		
a	[mm]	235		
k	[mm]	190		
f	[mm]	22	WEIGHT	[g] 5300

Tolerance: +/- 5% excluding dn

MARKING AND LABEL on fitting

EN1092-1/01A DN100 PN25

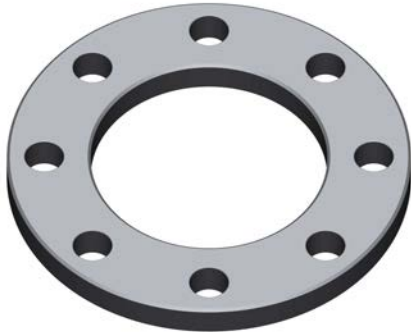
STANDARDS AND APPROVALS

EN 1092-1
ISO 9624

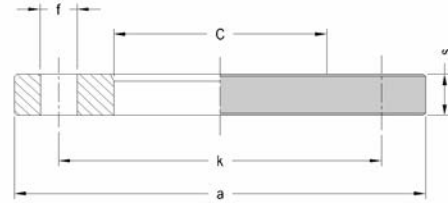
INFOS

- Steel flange not painted
- Mating dimensions according to standard EN 1092-1 with internal diameter according to standard ISO 9624
- The pipeline diameter identifies the choice of the flange

PRODUCT DETAILS



DIMENSIONS AND WEIGHT



ITEM	2045250140
dn [mm]	140
dn1 [mm]	
SDR	
PN	25
MATERIAL	STEEL
TRADEMARK	
MANUFACTURING TYPE	
USE	WATER-GAS
QUANTITY PER BOX	1
NOTE:	

dn	[mm]	140	HOLES N.	8
D STEEL	[mm]	125	PN	PN 25
C	[mm]	158		
s	[mm]	28		
a	[mm]	270		
k	[mm]	220		
f	[mm]	26	WEIGHT	[g] 7400
Tolerance: +/- 5% excluding dn				

MARKING AND LABEL on fitting

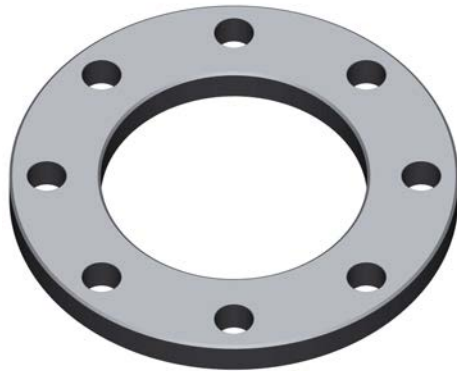
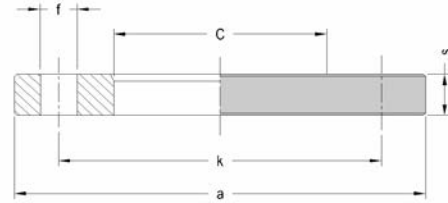
EN1092-1/01A DN125 PN25

STANDARDS AND APPROVALS

EN 1092-1
ISO 9624

INFOS

- Steel flange not painted
- Mating dimensions according to standard EN 1092-1 with internal diameter according to standard ISO 9624
- The pipeline diameter identifies the choice of the flange

PRODUCT DETAILS

DIMENSIONS AND WEIGHT


ITEM	2045250160
dn [mm]	160
dn1 [mm]	
SDR	
PN	25
MATERIAL	STEEL
TRADEMARK	
MANUFACTURING TYPE	
USE	WATER-GAS
QUANTITY PER BOX	1

dn	[mm]	160	HOLES N.	8
D STEEL	[mm]	150	PN	PN 25
C	[mm]	178		
s	[mm]	30		
a	[mm]	300		
k	[mm]	250		
f	[mm]	26	WEIGHT	[g] 8900

Tolerance: +/- 5% excluding dn

NOTE:

MARKING AND LABEL on fitting

EN1092-1/01A DN150 PN25

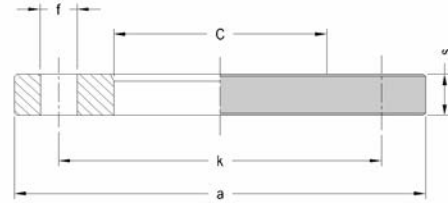
STANDARDS AND APPROVALS

 EN 1092-1
 ISO 9624

INFOS

- Steel flange not painted
- Mating dimensions according to standard EN 1092-1 with internal diameter according to standard ISO 9624
- The pipeline diameter identifies the choice of the flange

PRODUCT DETAILS

DIMENSIONS AND WEIGHT


ITEM	2045250180
dn [mm]	180
dn1 [mm]	
SDR	
PN	25
MATERIAL	STEEL
TRADEMARK	
MANUFACTURING TYPE	
USE	WATER-GAS
QUANTITY PER BOX	1

dn	[mm]	180	HOLES N.	8
D STEEL	[mm]	150	PN	PN 25
C	[mm]	188		
s	[mm]	30		
a	[mm]	300		
k	[mm]	250		
f	[mm]	26	WEIGHT	[g] 10000

Tolerance: +/- 5% excluding dn

NOTE:

MARKING AND LABEL on fitting

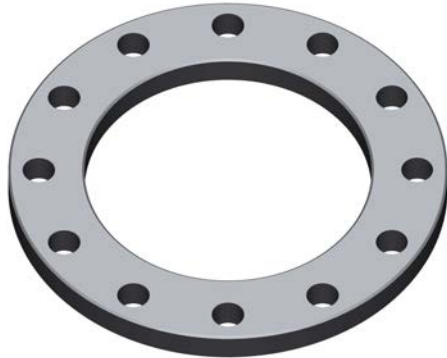
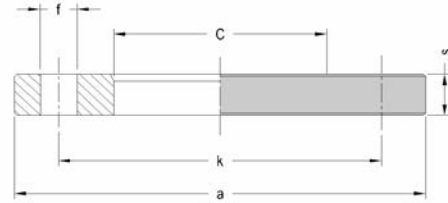
EN1092-1/01A DN150 PN25

STANDARDS AND APPROVALS

EN 1092-1
ISO 9624

INFOS

- Steel flange not painted
- Mating dimensions according to standard EN 1092-1 with internal diameter according to standard ISO 9624
- The pipeline diameter identifies the choice of the flange

PRODUCT DETAILS

DIMENSIONS AND WEIGHT


ITEM	2045250200
dn [mm]	200
dn1 [mm]	
SDR	
PN	25
MATERIAL	STEEL
TRADEMARK	
MANUFACTURING TYPE	
USE	WATER-GAS
QUANTITY PER BOX	1

dn	[mm]	200	HOLES N.	12
D STEEL	[mm]	200	PN	PN 25
C	[mm]	235		
s	[mm]	32		
a	[mm]	360		
k	[mm]	310		
f	[mm]	26	WEIGHT	[g] 12000

Tolerance: +/- 5% excluding dn

NOTE:

MARKING AND LABEL on fitting

EN1092-1/01A DN200 PN25

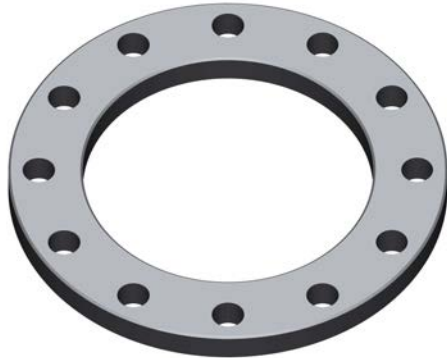
STANDARDS AND APPROVALS

 EN 1092-1
 ISO 9624

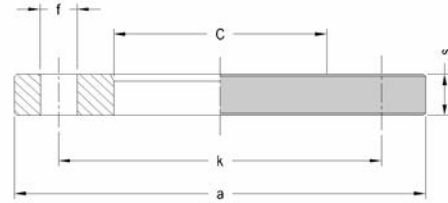
INFOS

- Steel flange not painted
- Mating dimensions according to standard EN 1092-1 with internal diameter according to standard ISO 9624
- The pipeline diameter identifies the choice of the flange

PRODUCT DETAILS



DIMENSIONS AND WEIGHT



ITEM	2045250225
dn [mm]	225
dn1 [mm]	
SDR	
PN	25
MATERIAL	STEEL
TRADEMARK	
MANUFACTURING TYPE	
USE	WATER-GAS
QUANTITY PER BOX	1

dn	[mm]	225	HOLES N.	12
D STEEL	[mm]	200	PN	PN 25
C	[mm]	238		
s	[mm]	32		
a	[mm]	360		
k	[mm]	310		
f	[mm]	26	WEIGHT	[g] 12000

Tolerance: +/- 5% excluding dn

NOTE:

MARKING AND LABEL on fitting

EN1092-1/01A DN200 PN25

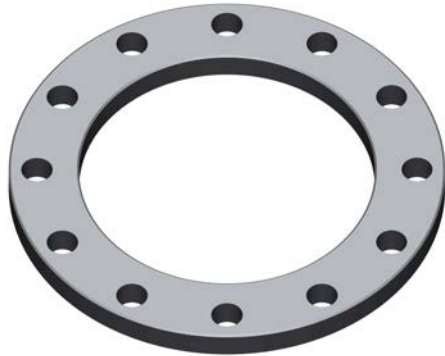
STANDARDS AND APPROVALS

EN 1092-1
ISO 9624

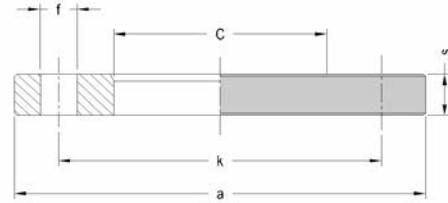
INFOS

- Steel flange not painted
- Mating dimensions according to standard EN 1092-1 with internal diameter according to standard ISO 9624
- The pipeline diameter identifies the choice of the flange

PRODUCT DETAILS



DIMENSIONS AND WEIGHT



ITEM	2045250250
dn [mm]	250
dn1 [mm]	
SDR	
PN	25
MATERIAL	STEEL
TRADEMARK	
MANUFACTURING TYPE	
USE	WATER-GAS
QUANTITY PER BOX	1

dn	[mm]	250	HOLES N.	12
D STEEL	[mm]	250	PN	PN 25
C	[mm]	288		
s	[mm]	35		
a	[mm]	425		
k	[mm]	370		
f	[mm]	30	WEIGHT	[g] 18000

Tolerance: +/- 5% excluding dn

MARKING AND LABEL on fitting

EN1092-1/01A DN250 PN25

STANDARDS AND APPROVALS

EN 1092-1
ISO 9624

INFOS

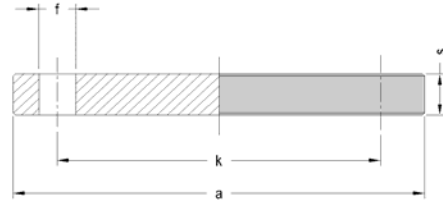
- Steel flange not painted
- Mating dimensions according to standard EN 1092-1 with internal diameter according to standard ISO 9624
- The pipeline diameter identifies the choice of the flange

blank steel flange

PRODUCT DETAILS



DIMENSIONS AND WEIGHT



ITEM	2046100032
dn [mm]	32
dn1 [mm]	
SDR	
PN	10/16
MATERIAL	STEEL
TRADEMARK	
MANUFACTURING TYPE	
USE	WATER-GAS
QUANTITY PER BOX	1
NOTE:	

dn	[mm]	32	PN	PN 10/16
D STEEL	[mm]	25		
s	[mm]	16		
a	[mm]	115		
k	[mm]	85		
f	[mm]	14		
HOLES N.		4	WEIGHT	[g] 1200
Tolerance: +/- 5% excluding dn				

MARKING AND LABEL on fitting

EN 1092-1/05A DN25 PN10/PN16

STANDARDS AND APPROVALS

EN 1092-1

INFOS

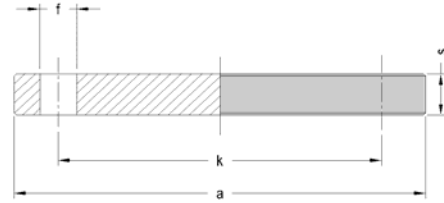
- Steel flange not painted
- Flanges suitable both PN 10 and PN 16

blank steel flange

PRODUCT DETAILS



DIMENSIONS AND WEIGHT



ITEM	2046100040
dn [mm]	40
dn1 [mm]	
SDR	
PN	10/16
MATERIAL	STEEL
TRADEMARK	
MANUFACTURING TYPE	
USE	WATER-GAS
QUANTITY PER BOX	1
NOTE:	

dn	[mm]	40	PN	PN 10/16
D STEEL	[mm]	32		
s	[mm]	16		
a	[mm]	140		
k	[mm]	100		
f	[mm]	18		
HOLES N.		4	WEIGHT	[g] 1800
Tolerance: +/- 5% excluding dn				

MARKING AND LABEL on fitting

EN 1092-1/05A DN32 PN10/PN16

STANDARDS AND APPROVALS

EN 1092-1

INFOS

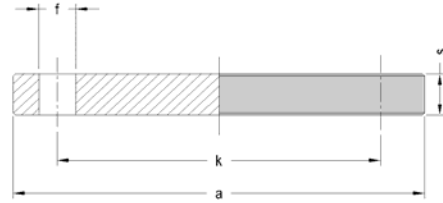
- Steel flange not painted
- Flanges suitable both PN 10 and PN 16

blank steel flange

PRODUCT DETAILS



DIMENSIONS AND WEIGHT



ITEM	2046100050
dn [mm]	50
dn1 [mm]	
SDR	
PN	10/16
MATERIAL	STEEL
TRADEMARK	
MANUFACTURING TYPE	
USE	WATER-GAS
QUANTITY PER BOX	1

dn	[mm]	50	PN	PN 10/16
D STEEL	[mm]	40		
s	[mm]	16		
a	[mm]	150		
k	[mm]	110		
f	[mm]	18		
HOLES N.		4	WEIGHT	[g] 2100

Tolerance: +/- 5% excluding dn

MARKING AND LABEL on fitting

EN 1092-1/05A DN40 PN10/PN16

STANDARDS AND APPROVALS

EN 1092-1

INFOS

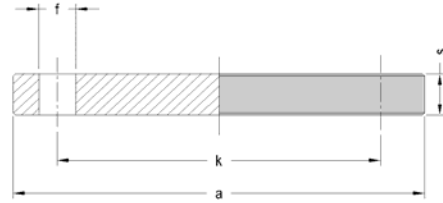
- Steel flange not painted
- Flanges suitable both PN 10 and PN 16

blank steel flange

PRODUCT DETAILS



DIMENSIONS AND WEIGHT



ITEM	2046100063
dn [mm]	63
dn1 [mm]	
SDR	
PN	10/16
MATERIAL	STEEL
TRADEMARK	
MANUFACTURING TYPE	
USE	WATER-GAS
QUANTITY PER BOX	1
NOTE:	

dn	[mm]	63	PN	PN 10/16
D STEEL	[mm]	50		
s	[mm]	18		
a	[mm]	165		
k	[mm]	125		
f	[mm]	18		
HOLES N.		4	WEIGHT	[g] 2900
Tolerance: +/- 5% excluding dn				

MARKING AND LABEL on fitting

EN 1092-1/05A DN50 PN10/PN16

STANDARDS AND APPROVALS

EN 1092-1

INFOS

- Steel flange not painted
- Flanges suitable both PN 10 and PN 16

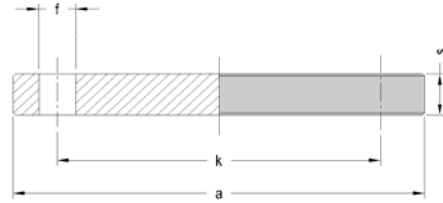
All dimensions are in millimeters and are intended as nominal and standard sizes: weights are in grams. EUROSTANDARD reserves the right to change geometries and dimensions of any product.

blank steel flange

PRODUCT DETAILS



DIMENSIONS AND WEIGHT



ITEM	2046100075
dn [mm]	75
dn1 [mm]	
SDR	
PN	10/16
MATERIAL	STEEL
TRADEMARK	
MANUFACTURING TYPE	
USE	WATER-GAS
QUANTITY PER BOX	1
NOTE:	

dn	[mm]	75	PN	PN 10/16
D STEEL	[mm]	65		
s	[mm]	18		
a	[mm]	185		
k	[mm]	145		
f	[mm]	18		
HOLES N.		4	WEIGHT	[g] 3600
Tolerance: +/- 5% excluding dn				

MARKING AND LABEL on fitting

EN 1092-1/05A DN65 PN10/PN16

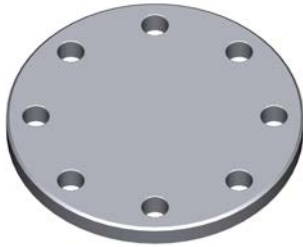
STANDARDS AND APPROVALS

EN 1092-1

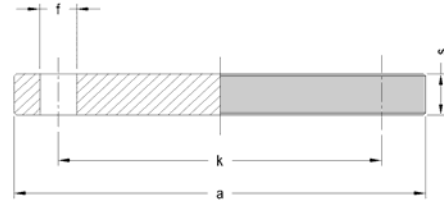
INFOS

- Steel flange not painted
- Flanges suitable both PN 10 and PN 16

PRODUCT DETAILS



DIMENSIONS AND WEIGHT



ITEM	2046100090
dn [mm]	90
dn1 [mm]	
SDR	
PN	10/16
MATERIAL	STEEL
TRADEMARK	
MANUFACTURING TYPE	
USE	WATER-GAS
QUANTITY PER BOX	1
NOTE:	

dn	[mm]	90	PN	PN 10/16
D STEEL	[mm]	80		
s	[mm]	20		
a	[mm]	200		
k	[mm]	160		
f	[mm]	18		
HOLES N.		8	WEIGHT	[g] 4500
Tolerance: +/- 5% excluding dn				

MARKING AND LABEL on fitting

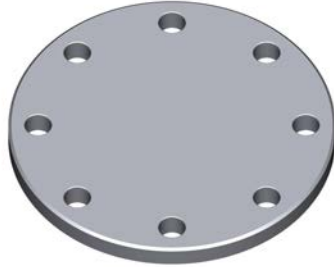
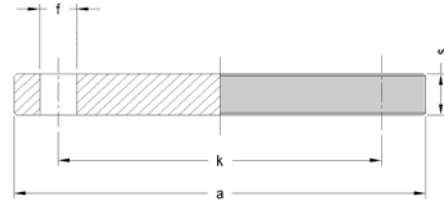
EN 1092-1/05A DN80 PN10/PN16

STANDARDS AND APPROVALS

EN 1092-1

INFOS

- Steel flange not painted
- Flanges suitable both PN 10 and PN 16

PRODUCT DETAILS

DIMENSIONS AND WEIGHT


ITEM	2046100110
dn [mm]	110
dn1 [mm]	
SDR	
PN	10/16
MATERIAL	STEEL
TRADEMARK	
MANUFACTURING TYPE	
USE	WATER-GAS
QUANTITY PER BOX	1
NOTE:	

dn	[mm]	110	PN	PN 10/16
D STEEL	[mm]	100		
s	[mm]	20		
a	[mm]	220		
k	[mm]	180		
f	[mm]	18		
HOLES N.		8	WEIGHT	[g] 5100
Tolerance: +/- 5% excluding dn				

MARKING AND LABEL on fitting

EN 1092-1/05A DN100 PN10/PN16

STANDARDS AND APPROVALS

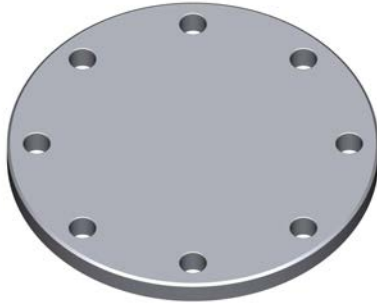
EN 1092-1

INFOS

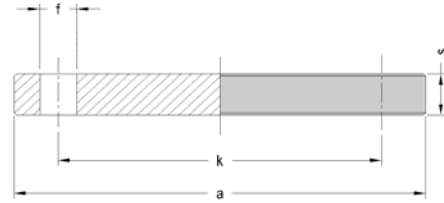
- Steel flange not painted
- Flanges suitable both PN 10 and PN 16
- Suitable for both diameters dn 110/125

blank steel flange

PRODUCT DETAILS



DIMENSIONS AND WEIGHT



ITEM	2046100140
dn [mm]	140
dn1 [mm]	
SDR	
PN	10/16
MATERIAL	STEEL
TRADEMARK	
MANUFACTURING TYPE	
USE	WATER-GAS
QUANTITY PER BOX	1

dn	[mm]	140	PN	PN 10/16
D STEEL	[mm]	125		
s	[mm]	22		
a	[mm]	250		
k	[mm]	210		
f	[mm]	18		
HOLES N.		8	WEIGHT	[g] 6700

Tolerance: +/- 5% excluding dn

NOTE:

MARKING AND LABEL on fitting

EN 1092-1/05A DN125 PN10/PN16

STANDARDS AND APPROVALS

EN 1092-1

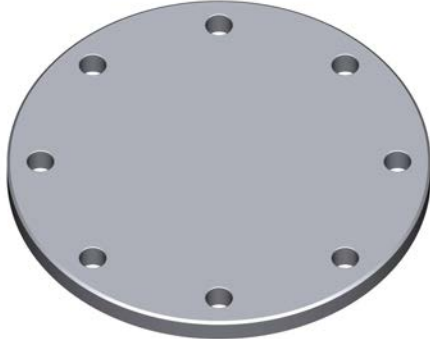
INFOS

- Steel flange not painted
- Flanges suitable both PN 10 and PN 16

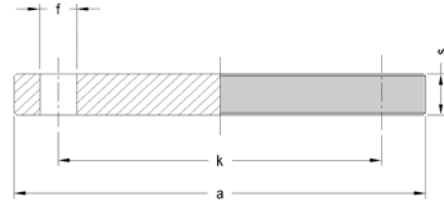
All dimensions are in millimeters and are intended as nominal and standard sizes: weights are in grams. EUROSTANDARD reserves the right to change geometries and dimensions of any product.

blank steel flange

PRODUCT DETAILS



DIMENSIONS AND WEIGHT



ITEM	2046100160
dn [mm]	160
dn1 [mm]	
SDR	
PN	10/16
MATERIAL	STEEL
TRADEMARK	
MANUFACTURING TYPE	
USE	WATER-GAS
QUANTITY PER BOX	1
NOTE:	

dn	[mm]	160	PN	PN 10/16
D STEEL	[mm]	150		
s	[mm]	22		
a	[mm]	285		
k	[mm]	240		
f	[mm]	22		
HOLES N.		8	WEIGHT	[g] 8500
Tolerance: +/- 5% excluding dn				

MARKING AND LABEL on fitting

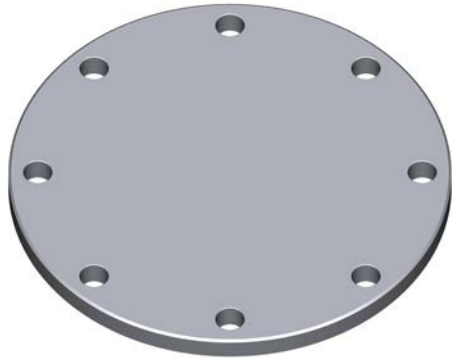
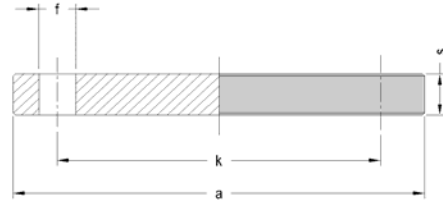
EN 1092-1/05A DN150 PN10/PN16

STANDARDS AND APPROVALS

EN 1092-1

INFOS

- Steel flange not painted
- Flanges suitable both PN 10 and PN 16
- Suitable for both diameters dn 160/180

PRODUCT DETAILS

DIMENSIONS AND WEIGHT


ITEM	2046100200
dn [mm]	200
dn1 [mm]	
SDR	
PN	10
MATERIAL	STEEL
TRADEMARK	
MANUFACTURING TYPE	
USE	WATER-GAS
QUANTITY PER BOX	1

dn	[mm]	200	PN	PN 10
D STEEL	[mm]	200		
s	[mm]	24		
a	[mm]	340		
k	[mm]	295		
f	[mm]	22		
HOLES N.		8	WEIGHT	[g] 13700

Tolerance: +/- 5% excluding dn

MARKING AND LABEL on fitting

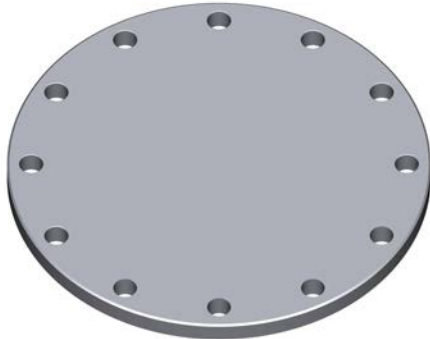
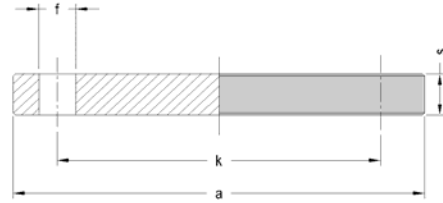
EN 1092-1/05A DN200 PN10

STANDARDS AND APPROVALS

EN 1092-1

INFOS

- Steel flange not painted
- Suitable for both diameters dn 200/225

PRODUCT DETAILS

DIMENSIONS AND WEIGHT


ITEM	2046100250
dn [mm]	250
dn1 [mm]	
SDR	
PN	10
MATERIAL	STEEL
TRADEMARK	
MANUFACTURING TYPE	
USE	WATER-GAS
QUANTITY PER BOX	1

dn	[mm]	250	PN	PN 10
D STEEL	[mm]	250		
s	[mm]	26		
a	[mm]	395		
k	[mm]	350		
f	[mm]	22		
HOLES N.		12	WEIGHT	[g] 20600

Tolerance: +/- 5% excluding dn

NOTE:

MARKING AND LABEL on fitting

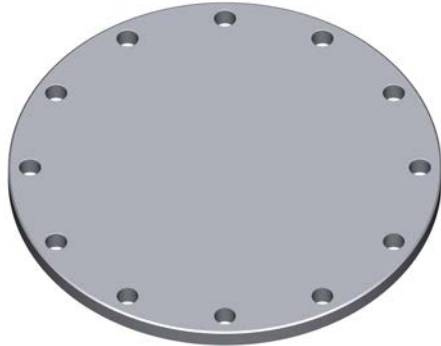
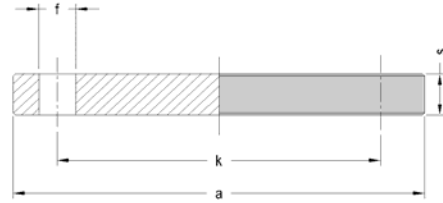
EN 1092-1/05A DN250 PN10

STANDARDS AND APPROVALS

EN 1092-1

INFOS

- Steel flange not painted
- Suitable for both diameters dn 250/280

PRODUCT DETAILS

DIMENSIONS AND WEIGHT


ITEM	2046100315
dn [mm]	315
dn1 [mm]	
SDR	
PN	10
MATERIAL	STEEL
TRADEMARK	
MANUFACTURING TYPE	
USE	WATER-GAS
QUANTITY PER BOX	1

dn	[mm]	315	PN	PN 10
D STEEL	[mm]	300		
s	[mm]	26		
a	[mm]	445		
k	[mm]	400		
f	[mm]	22		
HOLES N.		12	WEIGHT	[g] 30600

Tolerance: +/- 5% excluding dn

NOTE:

MARKING AND LABEL on fitting

EN 1092-1/05A DN300 PN10

STANDARDS AND APPROVALS

EN 1092-1

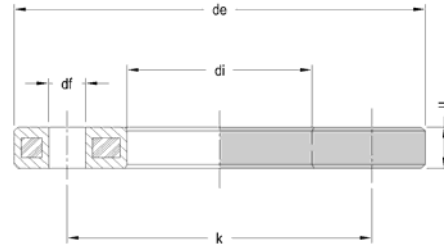
INFOS

- Steel flange not painted

PRODUCT DETAILS



DIMENSIONS AND WEIGHT



ITEM	2049100025
dn [mm]	25
dn1 [mm]	
SDR	
PN	10/16
MATERIAL	STEEL/PP
TRADEMARK	EURO
MANUFACTURING TYPE	
USE	WATER-GAS
QUANTITY PER BOX	1
NOTE:	

dn	[mm]	25	HOLES N.	4
D STEEL	[mm]	20	PN	PN10/16
de	[mm]	105		
k	[mm]	75		
h	[mm]	12		
di	[mm]	34		
df	[mm]	14	WEIGHT	[g] 308
Tolerance: +/- 5% excluding dn				

MARKING AND LABEL on fitting



de25 DN20 PN16 PP-ST EN1092-1 ISO7005

STANDARDS AND APPROVALS

ISO 9624

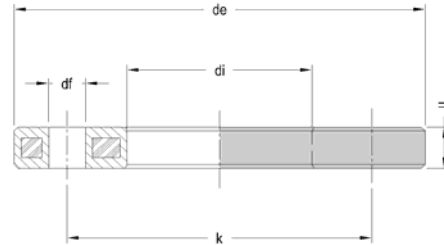
INFOS

- Mating dimensions according to standard EN 1092-1 with internal diameter according to standard ISO 9624
- The pipeline diameter identifies the choice of the flange
- Flanges suitable both PN 10 and PN 16

PRODUCT DETAILS



DIMENSIONS AND WEIGHT



ITEM	2049100032
dn [mm]	32
dn1 [mm]	
SDR	
PN	10/16
MATERIAL	STEEL/PP
TRADEMARK	EURO
MANUFACTURING TYPE	
USE	WATER-GAS
QUANTITY PER BOX	1
NOTE:	

dn	[mm]	32	HOLES N.	4
D STEEL	[mm]	25	PN	PN10/16
de	[mm]	115		
k	[mm]	85		
h	[mm]	16		
di	[mm]	42		
df	[mm]	14	WEIGHT	[g] 470
Tolerance: +/- 5% excluding dn				

MARKING AND LABEL on fitting



de32 DN25 PN16 PP-ST EN1092-1 ISO7005

STANDARDS AND APPROVALS

ISO 9624

INFOS

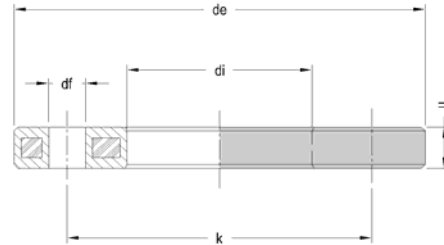
- Mating dimensions according to standard EN 1092-1 with internal diameter according to standard ISO 9624
- The pipeline diameter identifies the choice of the flange
- Flanges suitable both PN 10 and PN 16

All dimensions are in millimeters and are intended as nominal and standard sizes: weights are in grams. EUROSTANDARD reserves the right to change geometries and dimensions of any product.

PRODUCT DETAILS



DIMENSIONS AND WEIGHT



ITEM	2049100040
dn [mm]	40
dn1 [mm]	
SDR	
PN	10/16
MATERIAL	STEEL/PP
TRADEMARK	EURO
MANUFACTURING TYPE	
USE	WATER-GAS
QUANTITY PER BOX	1
NOTE:	

dn	[mm]	40	HOLES N.	4
D STEEL	[mm]	32	PN	PN10/16
de	[mm]	140		
k	[mm]	100		
h	[mm]	18		
di	[mm]	51		
df	[mm]	18	WEIGHT	[g] 730
Tolerance: +/- 5% excluding dn				

MARKING AND LABEL on fitting



de40 DN32 PN16 PP-ST EN1092-1 ISO7005

STANDARDS AND APPROVALS

ISO 9624

INFOS

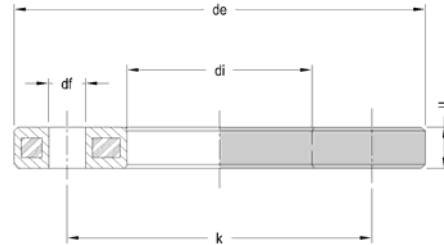
- Mating dimensions according to standard EN 1092-1 with internal diameter according to standard ISO 9624
- The pipeline diameter identifies the choice of the flange
- Flanges suitable both PN 10 and PN 16

All dimensions are in millimeters and are intended as nominal and standard sizes: weights are in grams. EUROSTANDARD reserves the right to change geometries and dimensions of any product.

PRODUCT DETAILS



DIMENSIONS AND WEIGHT



ITEM	2049100050
dn [mm]	50
dn1 [mm]	
SDR	
PN	10/16
MATERIAL	STEEL/PP
TRADEMARK	EURO
MANUFACTURING TYPE	
USE	WATER-GAS
QUANTITY PER BOX	1

dn	[mm]	50	HOLES N.	4
D STEEL	[mm]	40	PN	PN10/16
de	[mm]	150		
k	[mm]	110		
h	[mm]	18		
di	[mm]	62		
df	[mm]	18	WEIGHT	[g] 820

Tolerance: +/- 5% excluding dn

NOTE:

MARKING AND LABEL on fitting



de50 DN40 PN16 PP-ST EN1092-1 ISO7005

STANDARDS AND APPROVALS

ISO 9624

INFOS

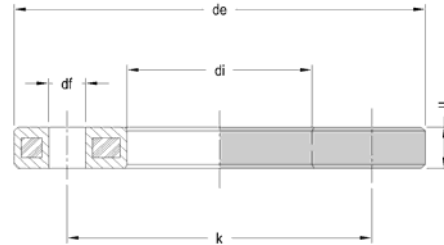
- Mating dimensions according to standard EN 1092-1 with internal diameter according to standard ISO 9624
- The pipeline diameter identifies the choice of the flange
- Flanges suitable both PN 10 and PN 16

All dimensions are in millimeters and are intended as nominal and standard sizes: weights are in grams. EUROSTANDARD reserves the right to change geometries and dimensions of any product.

PRODUCT DETAILS



DIMENSIONS AND WEIGHT



ITEM	2049100063
dn [mm]	63
dn1 [mm]	
SDR	
PN	10/16
MATERIAL	STEEL/PP
TRADEMARK	EURO
MANUFACTURING TYPE	
USE	WATER-GAS
QUANTITY PER BOX	1
NOTE:	

dn	[mm]	63	HOLES N.	4
D STEEL	[mm]	50	PN	PN10/16
de	[mm]	165		
k	[mm]	125		
h	[mm]	18		
di	[mm]	78		
df	[mm]	18	WEIGHT	[g] 1090
Tolerance: +/- 5% excluding dn				

MARKING AND LABEL on fitting



de63 DN50 PN16 PP-ST EN1092-1 ISO7005

STANDARDS AND APPROVALS

ISO 9624

INFOS

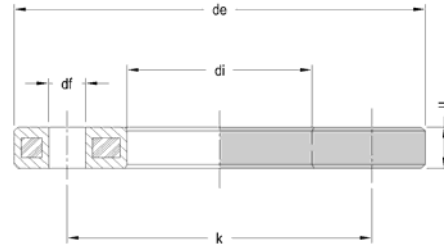
- Mating dimensions according to standard EN 1092-1 with internal diameter according to standard ISO 9624
- The pipeline diameter identifies the choice of the flange
- Flanges suitable both PN 10 and PN 16

All dimensions are in millimeters and are intended as nominal and standard sizes: weights are in grams. EUROSTANDARD reserves the right to change geometries and dimensions of any product.

PRODUCT DETAILS



DIMENSIONS AND WEIGHT



ITEM	2049100075
dn [mm]	75
dn1 [mm]	
SDR	
PN	10/16
MATERIAL	STEEL/PP
TRADEMARK	EURO
MANUFACTURING TYPE	
USE	WATER-GAS
QUANTITY PER BOX	1

dn	[mm]	75	HOLES N.	4
D STEEL	[mm]	65	PN	PN10/16
de	[mm]	188		
k	[mm]	145		
h	[mm]	18		
di	[mm]	92		
df	[mm]	18	WEIGHT	[g] 1380

Tolerance: +/- 5% excluding dn

MARKING AND LABEL on fitting



de75 DN65 PN16 PP-ST EN1092-1 ISO7005

STANDARDS AND APPROVALS

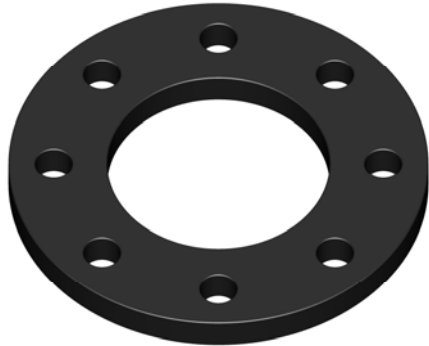
ISO 9624

INFOS

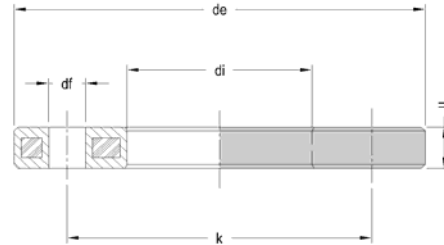
- Mating dimensions according to standard EN 1092-1 with internal diameter according to standard ISO 9624
- The pipeline diameter identifies the choice of the flange
- Flanges suitable both PN 10 and PN 16

All dimensions are in millimeters and are intended as nominal and standard sizes: weights are in grams. EUROSTANDARD reserves the right to change geometries and dimensions of any product.

PRODUCT DETAILS



DIMENSIONS AND WEIGHT



ITEM	2049100090
dn [mm]	90
dn1 [mm]	
SDR	
PN	10/16
MATERIAL	STEEL/PP
TRADEMARK	EURO
MANUFACTURING TYPE	
USE	WATER-GAS
QUANTITY PER BOX	1

dn	[mm]	90	HOLES N.	8
D STEEL	[mm]	80	PN	PN10/16
de	[mm]	204		
k	[mm]	160		
h	[mm]	20		
di	[mm]	108		
df	[mm]	18	WEIGHT	[g] 1310

Tolerance: +/- 5% excluding dn

MARKING AND LABEL on fitting



de90 DN80 PN16 PP-ST EN1092-1 ISO7005

STANDARDS AND APPROVALS

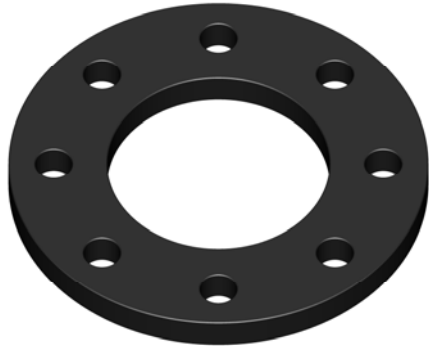
ISO 9624

INFOS

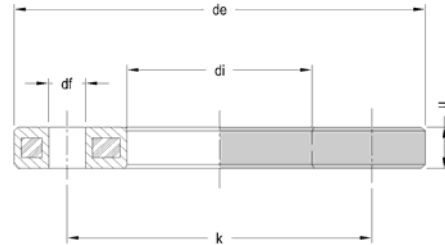
- Mating dimensions according to standard EN 1092-1 with internal diameter according to standard ISO 9624
- The pipeline diameter identifies the choice of the flange
- Flanges suitable both PN 10 and PN 16

All dimensions are in millimeters and are intended as nominal and standard sizes: weights are in grams. EUROSTANDARD reserves the right to change geometries and dimensions of any product.

PRODUCT DETAILS



DIMENSIONS AND WEIGHT



ITEM	2049100110
dn [mm]	110
dn1 [mm]	
SDR	
PN	10/16
MATERIAL	STEEL/PP
TRADEMARK	EURO
MANUFACTURING TYPE	
USE	WATER-GAS
QUANTITY PER BOX	1

dn	[mm]	110	HOLES N.	8
D STEEL	[mm]	100	PN	PN10/16
de	[mm]	224		
k	[mm]	180		
h	[mm]	20		
di	[mm]	128		
df	[mm]	18	WEIGHT	[g] 1370

Tolerance: +/- 5% excluding dn

MARKING AND LABEL on fitting



de110 DN100 PN16 PP-ST EN1092-1 ISO7005

STANDARDS AND APPROVALS

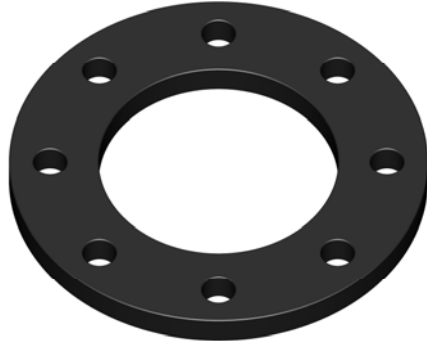
ISO 9624

INFOS

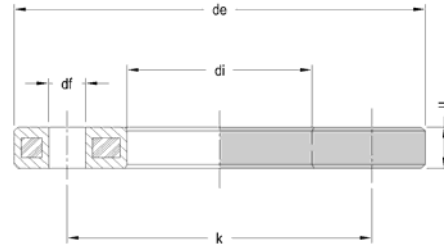
- Mating dimensions according to standard EN 1092-1 with internal diameter according to standard ISO 9624
- The pipeline diameter identifies the choice of the flange
- Flanges suitable both PN 10 and PN 16

All dimensions are in millimeters and are intended as nominal and standard sizes: weights are in grams. EUROSTANDARD reserves the right to change geometries and dimensions of any product.

PRODUCT DETAILS



DIMENSIONS AND WEIGHT



ITEM	2049100125
dn [mm]	125
dn1 [mm]	
SDR	
PN	10/16
MATERIAL	STEEL/PP
TRADEMARK	EURO
MANUFACTURING TYPE	
USE	WATER-GAS
QUANTITY PER BOX	1

dn	[mm]	125	HOLES N.	8
D STEEL	[mm]	100	PN	PN10/16
de	[mm]	224		
k	[mm]	180		
h	[mm]	20		
di	[mm]	135		
df	[mm]	18	WEIGHT	[g] 1370

Tolerance: +/- 5% excluding dn

MARKING AND LABEL on fitting



de125 DN100 PN16 PP-ST EN1092-1 ISO7005

STANDARDS AND APPROVALS

ISO 9624

INFOS

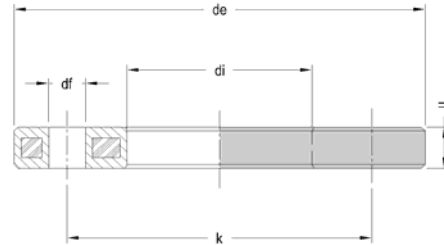
- Mating dimensions according to standard EN 1092-1 with internal diameter according to standard ISO 9624
- The pipeline diameter identifies the choice of the flange
- Flanges suitable both PN 10 and PN 16

All dimensions are in millimeters and are intended as nominal and standard sizes: weights are in grams. EUROSTANDARD reserves the right to change geometries and dimensions of any product.

PRODUCT DETAILS



DIMENSIONS AND WEIGHT



ITEM	2049100140
dn [mm]	140
dn1 [mm]	
SDR	
PN	10/16
MATERIAL	STEEL/PP
TRADEMARK	EURO
MANUFACTURING TYPE	
USE	WATER-GAS
QUANTITY PER BOX	1
NOTE:	

dn	[mm]	140	HOLES N.	8
D STEEL	[mm]	125	PN	PN10/16
de	[mm]	252		
k	[mm]	210		
h	[mm]	24		
di	[mm]	158		
df	[mm]	18	WEIGHT	[g] 2060
Tolerance: +/- 5% excluding dn				

MARKING AND LABEL on fitting



de140 DN125 PN16 PP-ST EN1092-1 ISO7005

STANDARDS AND APPROVALS

ISO 9624

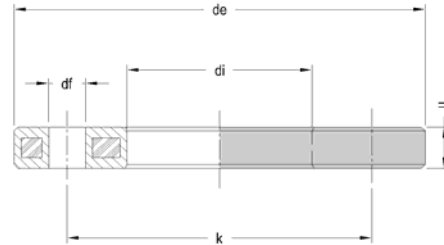
INFOS

- Mating dimensions according to standard EN 1092-1 with internal diameter according to standard ISO 9624
- The pipeline diameter identifies the choice of the flange
- Flanges suitable both PN 10 and PN 16

PRODUCT DETAILS



DIMENSIONS AND WEIGHT



ITEM	2049100160
dn [mm]	160
dn1 [mm]	
SDR	
PN	10/16
MATERIAL	STEEL/PP
TRADEMARK	EURO
MANUFACTURING TYPE	
USE	WATER-GAS
QUANTITY PER BOX	1
NOTE:	

dn	[mm]	160	HOLES N.	8
D STEEL	[mm]	150	PN	PN10/16
de	[mm]	285		
k	[mm]	240		
h	[mm]	24		
di	[mm]	178		
df	[mm]	22	WEIGHT	[g] 2840
Tolerance: +/- 5% excluding dn				

MARKING AND LABEL on fitting



de160 DN150 PN16 PP-ST EN1092-1 ISO7005

STANDARDS AND APPROVALS

ISO 9624

INFOS

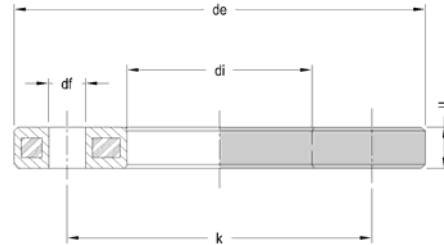
- Mating dimensions according to standard EN 1092-1 with internal diameter according to standard ISO 9624
- The pipeline diameter identifies the choice of the flange
- Flanges suitable both PN 10 and PN 16

All dimensions are in millimeters and are intended as nominal and standard sizes: weights are in grams. EUROSTANDARD reserves the right to change geometries and dimensions of any product.

PRODUCT DETAILS



DIMENSIONS AND WEIGHT



ITEM	2049100180
dn [mm]	180
dn1 [mm]	
SDR	
PN	10/16
MATERIAL	STEEL/PP
TRADEMARK	EURO
MANUFACTURING TYPE	
USE	WATER-GAS
QUANTITY PER BOX	1

dn	[mm]	180	HOLES N.	8
D STEEL	[mm]	150	PN	PN10/16
de	[mm]	285		
k	[mm]	240		
h	[mm]	24		
di	[mm]	188		
df	[mm]	22	WEIGHT	[g] 2800

Tolerance: +/- 5% excluding dn

MARKING AND LABEL on fitting



de180 DN150 PN16 PP-ST EN1092-1 ISO7005

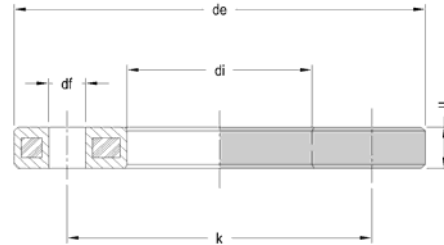
STANDARDS AND APPROVALS

ISO 9624

INFOS

- Mating dimensions according to standard EN 1092-1 with internal diameter according to standard ISO 9624
- The pipeline diameter identifies the choice of the flange
- Flanges suitable both PN 10 and PN 16

PRODUCT DETAILS

DIMENSIONS AND WEIGHT


ITEM	2049100200
dn [mm]	200
dn1 [mm]	
SDR	
PN	10
MATERIAL	STEEL/PP
TRADEMARK	EURO
MANUFACTURING TYPE	
USE	WATER-GAS
QUANTITY PER BOX	1
NOTE:	

dn	[mm]	200	HOLES N.	8
D STEEL	[mm]	200	PN	PN10
de	[mm]	340		
k	[mm]	295		
h	[mm]	26		
di	[mm]	235		
df	[mm]	22	WEIGHT	[g] 3470
Tolerance: +/- 5% excluding dn				

MARKING AND LABEL on fitting


de200 DN200 PN10 PP-ST EN1092-1 ISO7005

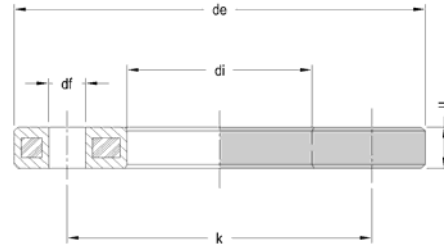
STANDARDS AND APPROVALS

ISO 9624

INFOS

- Mating dimensions according to standard EN 1092-1 with internal diameter according to standard ISO 9624
- The pipeline diameter identifies the choice of the flange

PRODUCT DETAILS

DIMENSIONS AND WEIGHT


ITEM	2049100225
dn [mm]	225
dn1 [mm]	
SDR	
PN	10
MATERIAL	STEEL/PP
TRADEMARK	EURO
MANUFACTURING TYPE	
USE	WATER-GAS
QUANTITY PER BOX	1
NOTE:	

dn	[mm]	225	HOLES N.	8
D STEEL	[mm]	200	PN	PN10
de	[mm]	340		
k	[mm]	295		
h	[mm]	26		
di	[mm]	238		
df	[mm]	22	WEIGHT	[g] 3520
Tolerance: +/- 5% excluding dn				

MARKING AND LABEL on fitting


de225 DN200 PN10 PP-ST EN1092-1 ISO7005

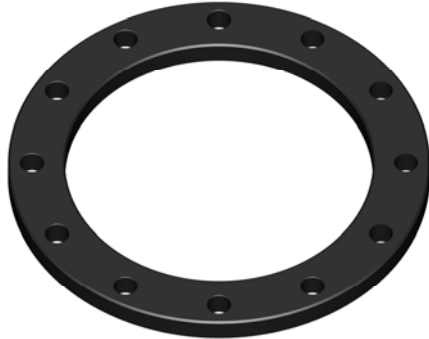
STANDARDS AND APPROVALS

ISO 9624

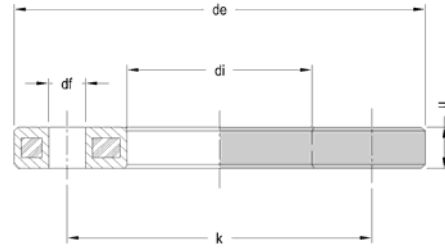
INFOS

- Mating dimensions according to standard EN 1092-1 with internal diameter according to standard ISO 9624
- The pipeline diameter identifies the choice of the flange

PRODUCT DETAILS



DIMENSIONS AND WEIGHT



ITEM	2049100250
dn [mm]	250
dn1 [mm]	
SDR	
PN	10
MATERIAL	STEEL/PP
TRADEMARK	EURO
MANUFACTURING TYPE	
USE	WATER-GAS
QUANTITY PER BOX	1
NOTE:	

dn	[mm]	250	HOLES N.	12
D STEEL	[mm]	250	PN	PN10
de	[mm]	395		
k	[mm]	350		
h	[mm]	29		
di	[mm]	288		
df	[mm]	22	WEIGHT	[g] 5100
Tolerance: +/- 5% excluding dn				

MARKING AND LABEL on fitting



de250 DN250 PN10 PP-ST EN1092-1 ISO7005

STANDARDS AND APPROVALS

ISO 9624

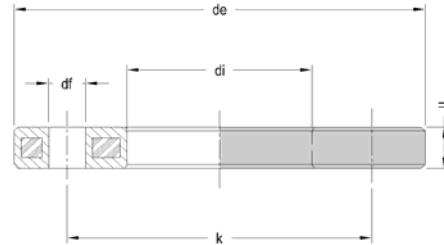
INFOS

- Mating dimensions according to standard EN 1092-1 with internal diameter according to standard ISO 9624
- The pipeline diameter identifies the choice of the flange

PRODUCT DETAILS



DIMENSIONS AND WEIGHT



ITEM	2049100280
dn [mm]	280
dn1 [mm]	
SDR	
PN	10
MATERIAL	STEEL/PP
TRADEMARK	EURO
MANUFACTURING TYPE	
USE	WATER-GAS
QUANTITY PER BOX	1
NOTE:	

dn	[mm]	280	HOLES N.	12
D STEEL	[mm]	250	PN	PN10
de	[mm]	395		
k	[mm]	350		
h	[mm]	29		
di	[mm]	294		
df	[mm]	22	WEIGHT	[g] 4170
Tolerance: +/- 5% excluding dn				

MARKING AND LABEL on fitting



de280 DN250 PN10 PP-ST EN1092-1 ISO7005

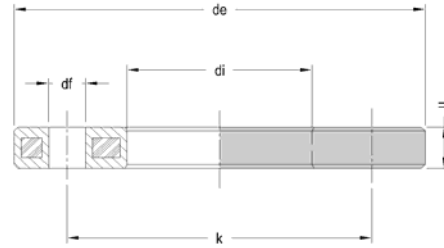
STANDARDS AND APPROVALS

ISO 9624

INFOS

- Mating dimensions according to standard EN 1092-1 with internal diameter according to standard ISO 9624
- The pipeline diameter identifies the choice of the flange

PRODUCT DETAILS

DIMENSIONS AND WEIGHT


ITEM	2049100315
dn [mm]	315
dn1 [mm]	
SDR	
PN	10
MATERIAL	STEEL/PP
TRADEMARK	EURO
MANUFACTURING TYPE	
USE	WATER-GAS
QUANTITY PER BOX	1
NOTE:	

dn	[mm]	315	HOLES N.	12
D STEEL	[mm]	300	PN	PN10
de	[mm]	445		
k	[mm]	400		
h	[mm]	33		
di	[mm]	338		
df	[mm]	22	WEIGHT	[g] 7360
Tolerance: +/- 5% excluding dn				

MARKING AND LABEL on fitting


de315 DN300 PN10 PP-ST EN1092-1 ISO7005

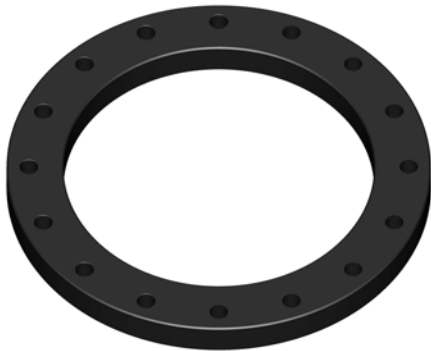
STANDARDS AND APPROVALS

ISO 9624

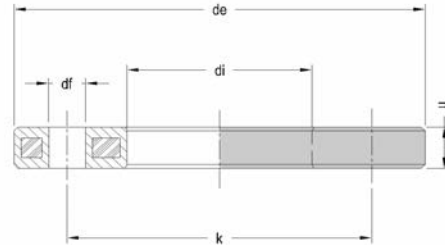
INFOS

- Mating dimensions according to standard EN 1092-1 with internal diameter according to standard ISO 9624
- The pipeline diameter identifies the choice of the flange

PRODUCT DETAILS



DIMENSIONS AND WEIGHT



ITEM	2049100355
dn [mm]	355
dn1 [mm]	
SDR	
PN	10
MATERIAL	STEEL/PP
TRADEMARK	
MANUFACTURING TYPE	
USE	WATER-GAS
QUANTITY PER BOX	1

dn	[mm]	355	HOLES N.	16
D STEEL	[mm]	350	PN	PN10
de	[mm]	514		
k	[mm]	460		
h	[mm]	50		
di	[mm]	376		
df	[mm]	22	WEIGHT	[g] 13700

Tolerance: +/- 5% excluding dn

NOTE:

MARKING AND LABEL on fitting

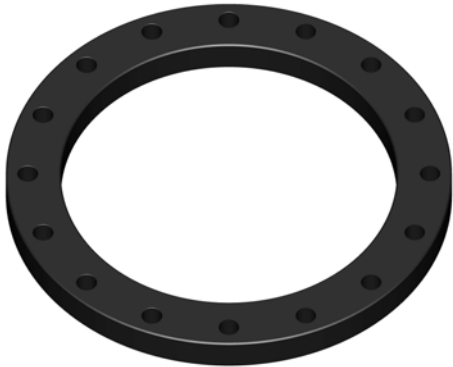
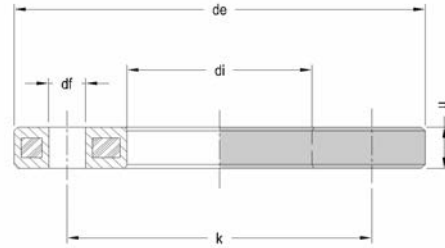
de355 DN350 PN10 PP-ST EN1092-1 ISO7005

STANDARDS AND APPROVALS

ISO 9624

INFOS

- Mating dimensions according to standard EN 1092-1 with internal diameter according to standard ISO 9624
- The pipeline diameter identifies the choice of the flange

PRODUCT DETAILS

DIMENSIONS AND WEIGHT


ITEM	2049100400
dn [mm]	400
dn1 [mm]	
SDR	
PN	10
MATERIAL	STEEL/PP
TRADEMARK	
MANUFACTURING TYPE	
USE	WATER-GAS
QUANTITY PER BOX	1
NOTE:	

dn	[mm]	400	HOLES N.	16
D STEEL	[mm]	400	PN	PN10
de	[mm]	571		
k	[mm]	515		
h	[mm]	54		
di	[mm]	430		
df	[mm]	26	WEIGHT	[g] 15900
Tolerance: +/- 5% excluding dn				

MARKING AND LABEL on fitting

de400 DN400 PN10 PP-ST EN1092-1 ISO7005

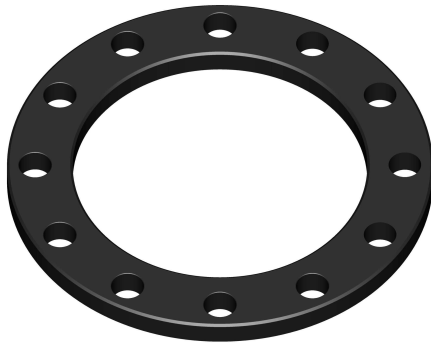
STANDARDS AND APPROVALS

ISO 9624

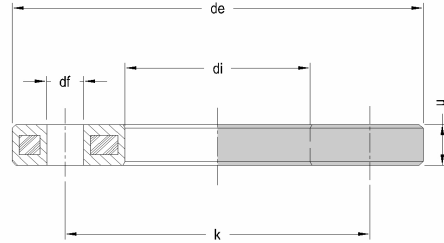
INFOS

- Mating dimensions according to standard EN 1092-1 with internal diameter according to standard ISO 9624
- The pipeline diameter identifies the choice of the flange

PRODUCT DETAILS



DIMENSIONS AND WEIGHT



ITEM	2049160200
dn [mm]	200
dn1 [mm]	
SDR	
PN	16
MATERIAL	STEEL/PP
TRADEMARK	EURO
MANUFACTURING TYPE	
USE	WATER-GAS
QUANTITY PER BOX	1
NOTE:	

dn	[mm]	200	HOLES N.	12
D STEEL	[mm]	200	PN	PN16
de	[mm]	340		
k	[mm]	295		
h	[mm]	26		
di	[mm]	235		
df	[mm]	22	WEIGHT	[g] 3350
Tolerance: +/- 5% excluding dn				

MARKING AND LABEL on fitting



de200 DN200 PN16 PP-ST EN1092-1 ISO7005

STANDARDS AND APPROVALS

ISO 9624

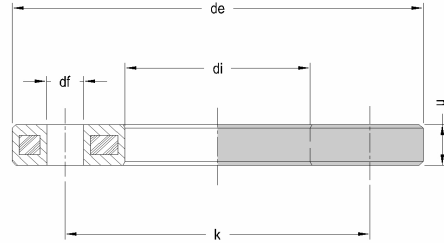
INFOS

- Mating dimensions according to standard EN 1092-1 with internal diameter according to standard ISO 9624
- The pipeline diameter identifies the choice of the flange

PRODUCT DETAILS



DIMENSIONS AND WEIGHT



ITEM	2049160225
dn [mm]	225
dn1 [mm]	
SDR	
PN	16
MATERIAL	STEEL/PP
TRADEMARK	EURO
MANUFACTURING TYPE	
USE	WATER-GAS
QUANTITY PER BOX	1
NOTE:	

dn	[mm]	225	HOLES N.	12
D STEEL	[mm]	200	PN	PN16
de	[mm]	340		
k	[mm]	295		
h	[mm]	26		
di	[mm]	238		
df	[mm]	22	WEIGHT	[g] 3200
Tolerance: +/- 5% excluding dn				

MARKING AND LABEL on fitting



de225 DN200 PN16 PP-ST EN1092-1 ISO7005

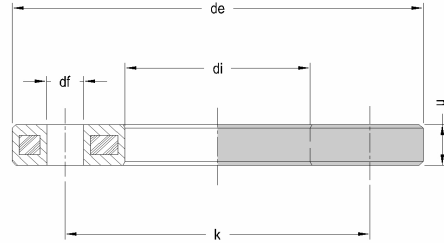
STANDARDS AND APPROVALS

ISO 9624

INFOS

- Mating dimensions according to standard EN 1092-1 with internal diameter according to standard ISO 9624
- The pipeline diameter identifies the choice of the flange

PRODUCT DETAILS

DIMENSIONS AND WEIGHT


ITEM	2049160250
dn [mm]	250
dn1 [mm]	
SDR	
PN	16
MATERIAL	STEEL/PP
TRADEMARK	EURO
MANUFACTURING TYPE	
USE	WATER-GAS
QUANTITY PER BOX	1

NOTE:

dn	[mm]	250	HOLES N.	12
D STEEL	[mm]	250	PN	PN16
de	[mm]	419		
k	[mm]	355		
h	[mm]	32		
di	[mm]	288		
df	[mm]	26	WEIGHT	[g] 4780

Tolerance: +/- 5% excluding dn

MARKING AND LABEL on fitting


de250 DN250 PN16 PP-ST EN1092-1 ISO7005

STANDARDS AND APPROVALS

ISO 9624

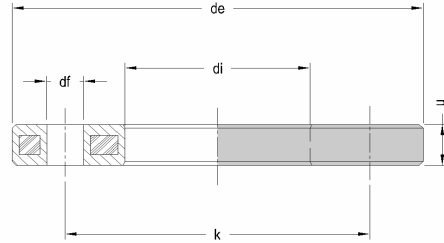
INFOS

- Mating dimensions according to standard EN 1092-1 with internal diameter according to standard ISO 9624
- The pipeline diameter identifies the choice of the flange

PRODUCT DETAILS



DIMENSIONS AND WEIGHT



ITEM	2049160280
dn [mm]	280
dn1 [mm]	
SDR	
PN	16
MATERIAL	STEEL/PP
TRADEMARK	EURO
MANUFACTURING TYPE	
USE	WATER-GAS
QUANTITY PER BOX	1
NOTE:	

dn	[mm]	280	HOLES N.	12
D STEEL	[mm]	250	PN	PN16
de	[mm]	419		
k	[mm]	355		
h	[mm]	32		
di	[mm]	294		
df	[mm]	26	WEIGHT	[g] 4700
Tolerance: +/- 5% excluding dn				

MARKING AND LABEL on fitting



de280 DN250 PN16 PP-ST EN1092-1 ISO7005

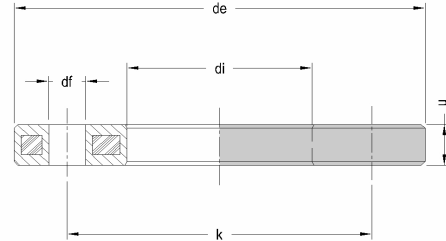
STANDARDS AND APPROVALS

ISO 9624

INFOS

- Mating dimensions according to standard EN 1092-1 with internal diameter according to standard ISO 9624
- The pipeline diameter identifies the choice of the flange

PRODUCT DETAILS

DIMENSIONS AND WEIGHT


ITEM	2049160315
dn [mm]	315
dn1 [mm]	
SDR	
PN	16
MATERIAL	STEEL/PP
TRADEMARK	EURO
MANUFACTURING TYPE	
USE	WATER-GAS
QUANTITY PER BOX	1
NOTE:	

dn	[mm]	315	HOLES N.	12
D STEEL	[mm]	300	PN	PN16
de	[mm]	478		
k	[mm]	410		
h	[mm]	33		
di	[mm]	338		
df	[mm]	26	WEIGHT	[g] 8150
Tolerance: +/- 5% excluding dn				

MARKING AND LABEL on fitting


de315 DN300 PN16 PP-ST EN1092-1 ISO7005

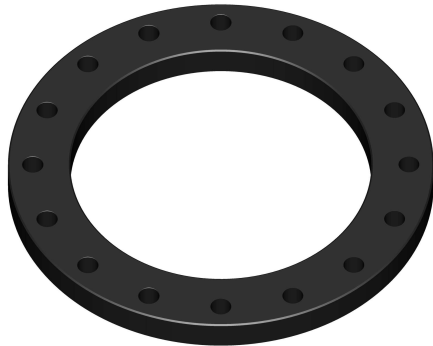
STANDARDS AND APPROVALS

ISO 9624

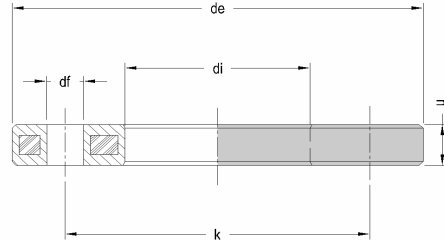
INFOS

- Mating dimensions according to standard EN 1092-1 with internal diameter according to standard ISO 9624
- The pipeline diameter identifies the choice of the flange

PRODUCT DETAILS



DIMENSIONS AND WEIGHT



ITEM	2049160355
dn [mm]	355
dn1 [mm]	
SDR	
PN	16
MATERIAL	STEEL/PP
TRADEMARK	
MANUFACTURING TYPE	
USE	WATER-GAS
QUANTITY PER BOX	1

dn	[mm]	355	HOLES N.	16
D STEEL	[mm]	350	PN	PN16
de	[mm]	532		
k	[mm]	470		
h	[mm]	50		
di	[mm]	376		
df	[mm]	26	WEIGHT	[g] 17750

Tolerance: +/- 5% excluding dn

MARKING AND LABEL on fitting

de355 DN350 PN16 PP-ST EN1092-1 ISO7005

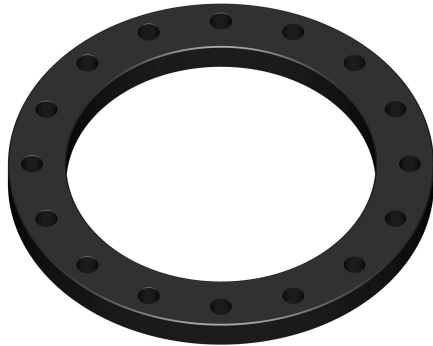
STANDARDS AND APPROVALS

ISO 9624

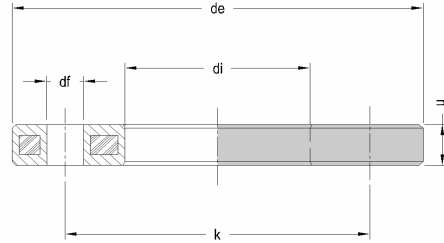
INFOS

- Mating dimensions according to standard EN 1092-1 with internal diameter according to standard ISO 9624
- The pipeline diameter identifies the choice of the flange

PRODUCT DETAILS



DIMENSIONS AND WEIGHT



ITEM	2049160400
dn [mm]	400
dn1 [mm]	
SDR	
PN	16
MATERIAL	STEEL/PP
TRADEMARK	
MANUFACTURING TYPE	
USE	WATER-GAS
QUANTITY PER BOX	1

dn	[mm]	400	HOLES N.	16
D STEEL	[mm]	400	PN	PN16
de	[mm]	592		
k	[mm]	525		
h	[mm]	54		
di	[mm]	430		
df	[mm]	30	WEIGHT	[g] 21850

Tolerance: +/- 5% excluding dn

MARKING AND LABEL on fitting

de400 DN400 PN16 PP-ST EN1092-1 ISO7005

STANDARDS AND APPROVALS

ISO 9624

INFOS

- Mating dimensions according to standard EN 1092-1 with internal diameter according to standard ISO 9624
- The pipeline diameter identifies the choice of the flange